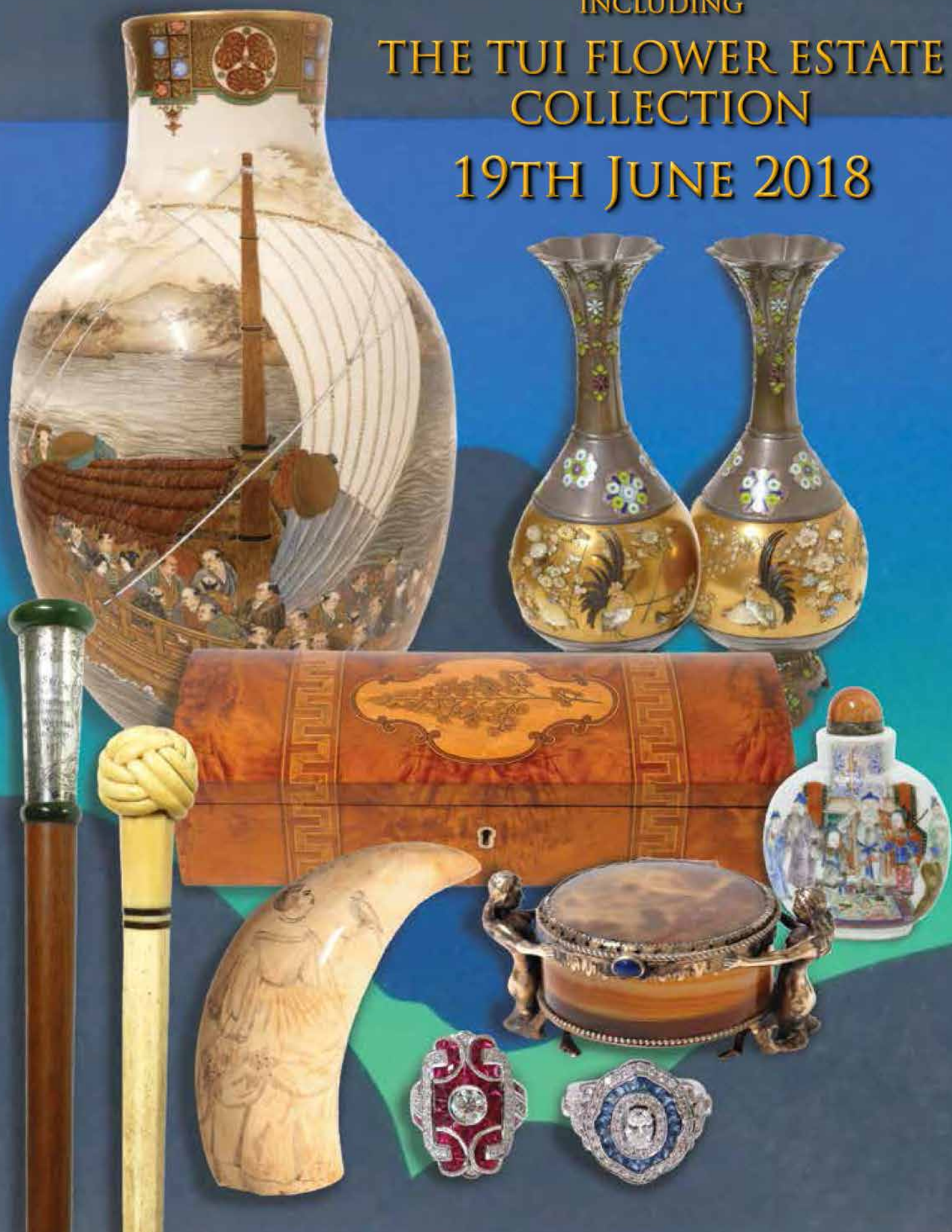




# ANTIQUE & ART AUCTION

INCLUDING  
THE TUI FLOWER ESTATE  
COLLECTION  
19TH JUNE 2018





# The Tui Flower Estate

Lucy Tui Hampton Aitken QSM (née Flower, 23 November 1925 – 15 August 2017), generally known as Tui Flower, was a pioneering New Zealand food writer.

Born in Matamata Tui received an education at Espom Girls' Grammar and at the University of Otago obtaining a diploma of Home Science. She furthered her education with Cordon Bleu courses in the United States and study at the École Hôtelière de Paris in 1954–55. Her exposure to food journalism in the United States aided her in becoming the food editor of *The Woman's Weekly* in 1965. She has been likened to the American food writer Julia Child and is credited with helping New Zealanders move away from their traditional meat, potato and vegetable dinner.

In her retirement Tui lived in Mt. Eden in the home owned by her maternal grandparents. It appears that Tui was not the only collector in the family with her parents and grandparents especially being avid collectors with a discerning eye for quality they amassed amazing collections of snuff boxes and bottles, fine Oriental jade, cloisonné, ivory, Satsuma, Maori artefacts, walking sticks, furniture including Anton Seuffert and more. Most of these collections remained intact and untouched in their home until now.

It is with great pleasure that we offer Part 1 of this incredible estate collection in this catalogue with items provenanced: The Flower Family Collection. Part 2 will be offered in our July 17th Antique & Art Auction.







### Antique & Art Catalogue

In our June auction we are excited to offer items from the Tui Flower estate which includes some of the most exquisite snuff boxes, walking sticks & ivories we have ever seen. Also offered from private vendors & other estates, a vast array of fine items including boxes, musical instruments, postcard albums, taxidermy & coats, fishing, militaria, Pacific, African, Maori & tribal artefacts, N.Z. Historical, Anton Seuffert glove box, a good selection of Len Castle, Waterford glasses, large Lladro figure groups, Doulton, Worcester, etc. The Oriental section has exceptionally fine bronzes, ivories, netsukes, as well as porcelain. The evening session starts at 5pm with jewellery which includes diamond, emerald, ruby & sapphire rings, earrings, etc., followed by clocks and watches, a very special Objet de Vertu section including exceptional snuff boxes, vinaigrettes, etc. The silver section includes Georgian & Victorian with a fine Hester Bateman silver tray, an excellent collection of rugs and runners is next with the furniture full of Georgian, Victorian, Chinese drawers, tables, desks, chairs, linen press, four impressive tall oak display cabinets and garden urns which sat outside the front steps of Tui's house & so much more. The fine art section has works by Roy Dalgarno, Ron Stenberg, Simon Williams, Don Binny, Fred Graham, Geoff Thomson, and others. Cordys has no hesitation in urging you to view this very special auction

#### Tuesday 19<sup>th</sup> June 2018 at 9.30am

Miscellaneous	1 - 143
Militaria	144 - 159
Artefacts , Tribal & NZ Historical	160 - 177
NZ Studio Art	178 - 231
Glass	232 - 247
Modern Movement	248 - 252
China & Porcelain	253 - 310
Oriental	311 - 452

#### Tuesday 19<sup>th</sup> June 2018 at 5.00pm

Jewellery	459 - 529
Clocks & Watches	530 - 542
Objet de vertu	543 - 594
Silver	595 - 680
Persian Rugs	681 - 713
Furniture	714 - 825
Fine Art	826 - 892

#### The sale may be viewed at the following times:

Friday 15th June	9.00am - 5.00pm
Sunday 17th June	11.00am - 3.00pm
Monday 18th June	9.00am - 5.00pm

#### FRONT COVER:



#### CATALOGUES \$12

A 15% percent buyers premium applies to this auction  
plus G.S.T. on premium = all up 17.25%  
Catalogue also online at [www.cordys.co.nz](http://www.cordys.co.nz).

### JOHN CORDY LIMITED

FINE ART AUCTIONEERS AND APPRAISERS

180 Great South Road, Remuera, Auckland 1051, New Zealand

P.O. Box 74071 Greenlane Phone (09)523-1049

Email [info@cordys.co.nz](mailto:info@cordys.co.nz) Website [www.cordys.co.nz](http://www.cordys.co.nz)



# The Catalogue

The figures given along side each lot are guide prices only.  
Measurements throughout are given in millimetres width x depth x height.  
This auction includes some entries from vendors "In Trade".

TUESDAY 19<sup>TH</sup> JUNE 2018

1<sup>ST</sup> SESSION AT 9.30AM

## MISCELLANEOUS

**1**  
**A whalebone cane**, the shaft with metal ferrule the top with four marine ivory discs and five horn discs, a small silver plate cartouche with dog to the front, handle absent. Provenance: The Flower Family Collection. Length 830. \$450

**2**  
**A short whalebone cane**, the shaft with metal ferrule, the marine ivory handle in the form of a dog's head, glass eyes and engraved silver collar. Provenance: The Flower Family Collection. Length 660. See page 5. \$850

**3**  
**A whalebone walking stick**, the shaft with metal ferrule the marine ivory handle in the form of a Turk's knot. Provenance: The Flower Family Collection. Length 885. See page 5 and front cover. \$1,500

**4**  
**Two walking sticks**, both with rounded handles, one of wood from the HMAS Sydney commemorating the destruction of the German warship 'Emden, 1914', the other of wood from the pre-historic Arapuni forest. Provenance: The Flower Family Collection. Length 900. \$650

**5**  
**A walking stick**, the shaft with metal ferrule, two bands of coloured Tunbridge ware decoration to the top, the handle rounded form inlaid with various timbers in varying patterns. Provenance: The Flower Family Collection. Length 935. \$450

**6**  
**An old horn walking cane**, cylindrical sections made to simulate bamboo, threaded on a steel rod, the handle of a stylised dog's head, metal ferrule. Provenance: The Flower Family Collection. Length 840. See page 5. \$450

**7**  
**A wood and bone walking stick**, with silver collar engraved 'Ship Boyd - Sunk 1809' referencing the burning of the Boyd in Whangaroa Harbour, the bone handle with carved leaves to the front. Provenance: The Flower Family Collection. Length 870. See page 5. \$750

**8**  
**An old horn walking stick**, the shaft of sections of horn, silver collar and a horn curved handle, metal ferrule. Provenance: The Flower Family Collection. Length 940. \$350

**9**  
**A walking stick**, the ebony shaft fitted

to a silver collar and china handle, decorated with a woman in formal dress, gilt embellishments. Provenance: The Flower Family Collection. Length 950. \$200

**10**  
**An important NZ walking stick**, the shaft made from jarrah timber from James Busby's Residence which later became the Treaty House. The plain wood shaft topped with a pounamu band, a wide silver collar engraved with 'This Stick is Part of the House wherein the Treaty of Waitangi was signed 1840' with a polished piece of pounamu to the top of the collar. Length 930. The Residence fell into disrepair in the 1890s and was not restored until the 1930s when it was bought and gifted to the nation by Lord Bledisloe. Provenance: The Flower Family Collection. Length 930. See page 5 and front cover. \$1,500

**11**  
**An ebonised walking stick**, with horn handle and a silver collar. London 1898. \$120

**12**  
**A vintage palmwood walking stick**, with 9ct. gold mount by B.M. & Co. Old repair. \$150

**13**  
**A hazelnut walking stick**, the tip carved with the head of a hound, the end with metal hiking spike. See page 5. \$180

**14**  
**An early 1900s walking cane**, the silver handle with Art Nouveau designs, stamped 800 and maker's mark. \$250

**15**  
**A vintage walking stick**, the silver plate terminal in the form of a dog's head, with glass eyes, metal hiking spike to end. See page 5. \$180

**16**  
**An early 1900s walking cane**, the WMF silver plate handle with restrained decoration, ostrich mark, deer hiking badge to the front, metal ferrule. \$180

**17**  
**A hazelnut walking stick**, the handle terminating in a silver wild boar's head, metal ferrule. See page 5. \$180

**18**  
**A Victorian mother-of-pearl and silver card case**, with concertina interior. Length 110. \$100

**19**  
**Two silver and tortoiseshell piqué inlay cases**, one for cigars, the smaller for vestas, both decorated with birds and trees. Provenance: The Flower Family Collection. Length 140 and 65. \$350

**20**  
**An Eastern silver filigree card case**,

decorated with flowers. Provenance: The Flower Family Collection. 50 x 85. \$150

**21**  
**A 19thC tortoiseshell visiting card case**, the hinged lid opening to reveal ivory clashed edges. 105 x 75. \$100

**22**  
**A collection of 10 small antique boxes**, horn, papier-mâché, wood, lacquer, etc., snuff boxes and others. \$120

**23**  
**A collection of 11 small antique boxes**, papier-mâché, lacquer, wood, horn and tortoise-shell, etc., mostly snuff boxes. \$150

**24**  
**A collection of 10 small antique snuff boxes**, lacquer, horn, wood, etc. \$120

**25**  
**A collection of 10 small old boxes**, mostly for snuff, wood, horn, lacquer, brass, etc. \$150

**26**  
**A collection of banded agate items**, includes snuff boxes, salts, etc. Provenance: The Flower Family Collection. \$250

**27**  
**Three Victorian needle cases**, two bone and one vegetable ivory, all three carved and decorated. Provenance: The Flower Family Collection. \$180

**28**  
**Four old needle cases**, one painted milk glass, the other silver plate, and two painted celluloid. Provenance: The Flower Family Collection. \$120

**29**  
**A collection of ivory and bone sewing accessories**, includes tape measure, thread holders and sewing clamps. Provenance: The Flower Family Collection. \$250

**30**  
**A small carved ivory lidded basket**, the top profusely carved with fruit and flowers, basket weave pattern to the side and base. Diameter 55. \$250

**31**  
**A Victorian tin box**, filled with exquisitely and finely worked lace and worked samples. Provenance: The Flower Family Collection. \$150

**32**  
**An unusual gilt metal mesh miser's purse**, decorated with three rings set with coloured stones and coloured and gilt drops, possibly a copy of a medieval purse, one ring engraved 'Hilary Le Vaile 1450'. Provenance: The Flower Family Collection. \$120

**33**  
**A Victorian Tunbridge ware work box**, the exterior with traditional decoration,

the interior with fitted compartments with various interesting contents. Provenance: The Flower Family Collection. 270 x 200 x 125. \$150

**34**  
**A Victorian walnut dressing case**, with mother-of-pearl escutcheons and a concealed drawer in the base together with contents, lidded jars, inkwells, etc. with key. Width 310. \$250

**35**  
**A good quality early 19thC English rosewood writing box**, with plain mother-of-pearl escutcheons, gadrooned borders and fitted interior complete with two inkwells. Width 410. \$300

**36**  
**A late Victorian quill cutter**, plain tapered bone handle, the steel blade named Sabin & Richardson, Sheffield, a spike fitted to the handle butt end. Length 168, in original card case. \$150

**37**  
**A quality Victorian mahogany brass bound travelling vanity box**, recessed brass strapping, corners and handles, enclosing an interior fitted with various bottles, boxes and trays, a mirror enclosed to the hinged lid. 310 x 225 x 135. \$380

**38**  
**An Anglo-Indian ebony desk standish**, drawer to the front, the top with various compartments for office accessories. Provenance: The Flower Family Collection. 360 x 260. \$250

**39**  
**A bronzed spelter novelty monkey vesta**, of a monkey prising open a giant clam, removable permanent match to his head, striker to his left forearm. Provenance: The Flower Family Collection. Height 100. \$120

**40**  
**A 1930s Meccano clockwork 'Two-seater Sports Car'**, with box and key, original Meccano branded rubber tyres, introduced 1933, non-constructural, clockwork motor drive at fault. Length of car 215. The original box with printed lid. \$600

**41**  
**A vintage cast iron Greedy Boy money box**, red jacket, made in England. Provenance: The Flower Family Collection. \$220

**42**  
**A vintage cast iron money box**, a smiley face on legs, 'Save and Smile Money Box'. Provenance: The Flower Family Collection. 110 x 120. See page 5. \$100

**43**  
**An old unusual silver plated Swanee slide saxophone**, with reeded mouthpiece. Last patent date 1927. Length 330. \$300

**44**  
**An antique concertina**, a small hexagonal concertina in original rosewood box, mother-of-pearl keyhole escutch-

eon. Provenance: The Flower Family Collection. 200 x 120. \$150

**45**  
**A vintage walnut concertina**, the octagonal form concertina by C. Wheatstone & Co. and in original leather case. Provenance: The Flower Family Collection. 210 x 210. \$180

**46**  
**A Swiss walnut cased orchestra music box**, playing eight airs, on a single cylinder, three bells and a drum. 295 x 565 x 275. See page 5. \$1,500

**47**  
**John Quincy Adams Ward (1830-1910), bronze portrait statuette** of Henry B. Hyde a notable American businessman. From an edition of approximately 81, c.1901. Height 515. \$800

**48**  
**A pair of spelter statuettes**, after Shakespearean Elizabethan characters. Height 385. \$400

**49**  
**A bronze model of Tragan's Column**, completed in AD113 and located in Tragan's Forum in Rome. Height 320. \$150

**50**  
**A pair of 19thC gilt ormolu stands**, suitable for trumpet shaped glass or china vases, the ornate base of a horse and cherub holding a shell form dish with mythical beasts to each side, acorn and leaf frame to hold the vase. 200 x 280. \$350

**51**  
**A bronze replica miniature cannon**, the three ring barrel with a star insignia, raised on a spoke wheeled carriage. Length 330. See page 5. \$300

**52**  
**A cast metal figure**, a classically dressed woman holding a basket of flowers. Provenance: The Flower Family Collection. Height 270. \$120

**53**  
**A pair of Italian Pietra Dura tiles**, one of a musician, the other a woman dancing, both in old oak frames. Provenance: The Flower Family Collection. 230 x 115. See page 5. \$450

**54**  
**A Hong Kong stamp collection**, includes older issues. \$150

**55**  
**A large United States stamp collection**, held in a Lighthouse album, includes older issues. \$180

**56**  
**A large postcard album**, with international cards, greetings cards, film stars and early N.Z. postcards. Provenance: The Flower Family Collection. See page 5. \$600 - \$900

**57**  
**A postcard album**, containing 26 rare vintage illusion postcards as well as many film stars, battleships and native people, together with a centennial newspaper of Mt Eden 1868-1968.

Provenance: The Flower Family Collection. \$600 - \$900

**58**  
**A large postcard album**, filled with vintage coloured postcards featuring Asti beauties, biblical scenes, copies of Old Masters, as well as many old black and white travel postcards. Provenance: The Flower Family Collection. \$600 - \$900

**59**  
**An autographed The Beatles Christmas Show (Brian Epstein) programme. The souvenir programme from the 16-night 1963/1964 Finsbury Park Astoria show with signatures of John Lennon, Paul McCartney, George Harrison and Ringo Starr** to the cover, we consider these signatures to have been made by Neil Aspinall, the group's roadie, driver, manager. The inside pages with bios, editorial and photographs of the accompanying performers in the show, each image with autographs of Billy J. Kramer; Rolf Harris; The Dakotas (Tony Mansfield, Mike Maxfield, Robin MacDonald and Ray Jones); The Fourmost (Mike Millward, Brian O'Hara, Dave Lovelady, Billy Hatton); Cilla Black; Tommy Quickly; The Barron Knights (Duke D'mond, Peter 'Peanut' Langford, Butch Baker, Don Ringsell, Bill Sharkey). We consider these autographs are more likely to be by the artist's themselves. The extraordinary complete autograph collection of all 21 Merseybeat and chart-topping performers at this show leads to the presumption that the autograph collector was associated with the Astoria Theatre thus gaining access to all performers. The programme was discovered slipped inside a copy of 'New Zealand The Beautiful - Microwave Cookbook', purchased at a garage sale by our vendor. \$1,000 - \$2,000

**60**  
**Clarice Cliff, 'The Bizarre Affair'**, together with a Christie's 1995 Clarice Cliff catalogue. \$100

**61**  
**A book of Mohammed Racim's Algerian miniature paintings.** \$80

**62**  
**'Mapplethorpe' photographs (prepared in collaboration with the Robert Mapplethorpe Foundation) and Arthur C Danto (essayist)**, published Random House, NY, 1992, hardcover with slipcase, 382pp. 325 x 300. \$150

**63**  
**Stanford's Chart of the Thames Estuary**, framed and glazed, overall 790 x 775; along with a Stanford's chart, 'The River Thames', framed and glazed. 190 x 565. \$200

**64**  
**An early/mid 20thC medical wall chart**, detailing eyes, ears, nose, tongue and hair follicle, printed in colours. 675 x 950. See page 5. \$250

**65**  
**An early/mid 20thC medical wall**

**chart**, 'American Frohse Anatomical Charts Plate No. 8, The Digestive System', printed in colours and detailed 'Original Drawings By Max Brodel, Completed By Betty Browning'. 1600 x 1025. \$650

**66**  
**A glass dome on stand**, containing a wax fruit arrangement and kauri gum pieces. 250 x 390. \$400

**67**  
**Four pieces of coral**, includes boulder, star coral, etc. \$200

**68**  
**An African ivory bust of a young girl**, supporting a cylinder shaped vase, with a deep relief carving of village figures. Height on wood stand 255. \$200

**69**  
**A good taxidermy Burchell's zebra head**, ears raised, head turned slightly to the right, wall mounting. Depth from nose to wall 765. See page 5. \$5,000

**70**  
**A taxidermy armadillo**, with glass eyes. Some distress. Length 560. \$700

**71**  
**Twenty-five taxidermy insects**, all set in Perspex tablets, various species. \$120

**72**  
**A good taxidermy red stag trophy mount**, with impressive 13-point antler spread. Width 720. See page 5. \$600

**73**  
**An early 20thC substantial carved ivory paper knife**, plainly carved from a tusk section, the tapered blade with medial rib. Provenance: The Flower Family Collection. Length 356. \$250

**74**  
**A large old sperm whale tooth**, in good polish. Provenance: The Flower Family Collection. 900gms. Length 205. See page 5. \$600

**75**  
**An enormous old sperm whale tooth**, good polish. Provenance: The Flower Family Collection. 1295gms. Length 240. See page 5. \$1,000

**76**  
**A 19thC large scrimshaw whale's tooth**, finely lined and dot engraved, a classical woman in formal dress with floral swags, a bird perched upon her raised left hand, a handkerchief in her right. Provenance: The Flower Family Collection. 970gms. Length 230. See page 5 and front cover. \$1,800

**77**  
**A full length Arctic fox fur coat**, alternating rows of fur and suede, fully lined, some wear around pockets. See page 5. \$450

**78**  
**A full length black fur coat**, blouson sleeves, fully lined. \$450

**79**  
**A full length red fox fur coat**, large shawl collar, chevron pattern to the pelts, fully lined. See page 5. \$550

**80**  
**A grey mink jacket**, blouson sleeves, fully lined. \$450

**81**  
**A full length racoon fur coat**, fully lined. \$450

**82**  
**A racoon fur jacket**, large shawl collar, the sleeves with alternating brown suede panels, fully lined. \$350

**83**  
**A racoon fur jacket**, blouson sleeves, the pelt sewn in a chevron pattern, large shawl collar of a different fur, fully lined. \$450

**84**  
**An ocelot fur jacket the sleeves with small cuffs**, fully lined, together with a matching hat. \$550

**85**  
**An ocelot fur jacket**, large shawl collar, fully lined, together with a matching hat. \$450

**86**  
**A caramel brown mink jacket**, fully lined. \$350

**87**  
**A full length jaguar fur coat together with matching hat**, black trim to the coat possibly bear fur, fully lined and in good condition. See page 5. \$1,200

**89**  
**A hand carved and polychrome painted wooden duck decoy**, with painted ring eyes, c.1950s. Length 380. \$180

**90**  
**A pair of hand carved and painted wooden NZ green winged teal display decoys**, in actual size. Length 240. \$220

**91**  
**A large wide-body canvasback red-head wooden duck decoy**, hand carved from heart white cedar, lead belly-weight and anchor tie, incised maker's owner's initials under tail. Length 360. \$240

**92**  
**An alloy and brass telescopic extending and folding trout landing net**, with belt clip, priest end and original netting. Length 850. \$100

**93**  
**A rare and authentic Heaton's 2½" brass reel**, with impressed fishing scenes to both sides. \$250

**94**  
**Three vintage brass reels**, a tiny 1½" bone handled brass reel with original finish, a 2" Birmingham bone handled brass reel and a 2" brass reel with 'dog bone' style winder. \$180

**95**  
**A Hardy Bros. leather fly wallet**, with felt and parchment pages, full of old Hardy sprays of wet flies along with many other styles, embossed maker's details, c.1920. 6½" X 4". \$225

**96**  
**A small 'waistcoat pocket' Hardy Bros.**

**japanned metal fly box**, complete with a good selection of small Hardy flies (some named), c.1890. Affixed maker's label. 4½" x 2¾" \$125

**97**  
**An Ogden Smith japanned metal fly box**, with cast compartment to the lid and opening to reveal ten windowed compartments with flip lids. Affixed maker's label to the interior. 5" x 3½". \$150

**98**  
**An early Allcock alloy fly box**, opening to reveal 16 window lidded flip up compartments and a felt pad opposite, complete with approx. 100 old flies, c.1920s. 6½" x 3½". \$120

**99**  
**An English oak fly box**, of hinged sections with dovetailed corners opening to reveal cork bars set with approx. 200 flies, c.1890s. 5½" x 4". \$120

**100**  
**A rare vintage 16" Brady 'Conway' wicker fishing creel with canvas bag**, labelled for Ogden Smith to the flap, wicker in good condition, wear to the canvas. \$200

**101**  
**A Scottish wicker fishing creel**, with leather binding, c.1940. \$150

**102**  
**An American Heddon 'Pal' trout casting rod**, with matching reel, early type cork handle, thumb grip, glass agates to line guides. \$120

**103**  
**A Hardy Bros. split cane fly rod 'Kohinoor'**, Palakano cane, complete with a good Hardy 3¾" 'St. George' fly reel, glass agate guide, ribbed brass foot, old line and a Hardy zip case and cloth rod bag. \$375

**104**  
**A carved and painted wood duck decoy**, with glass eyes. Length 370. \$120

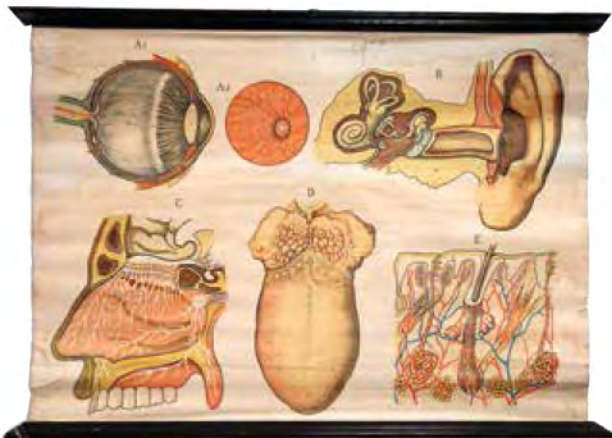
**105**  
**A fine woven canvas oilskin bodied hen duck decoy**, with kapok filling, glass eyes, beak repaired. Length 370. \$140

**106**  
**A balsa wood carved duck eyes**, with glass eyes, lead weighted keel. Length 370. \$160

**107**  
**A Farlow's 'Sun' 7" walnut big game sea fishing reel**, labelled with decal for Frank Wiseman's Ltd, Queen St., Auckland outfitter; with brass star back and brass lined back plate, wingnut pressure clutch brake and horn handles. See page 5. \$220

**108**  
**A W. H. Tisdall's 4" alloy reel**, stamped on the back plate, with 'telephone' drum release latch, strap-over tension regulator, smooth brass foot and ivory handle. An early NZ reel in good condition retaining most of original finish, c.1910. See page 8. \$150





**A 3¾" trout reel by Walker Brampton (Alnwick)**, for R. Sanderson Ltd. Turangi, with smooth brass foot, two screw drum release latch, black ebonite handle. \$150

110

**A 3½" Housby Bros. (Auckland) alloy trout reel**, with smooth brass foot and ivory handle. Well used condition, c.1930. \$100

111

**A carved antler cabinet piece anglers 'priest' by Taupo master carver Des Baker**, carved as a dragonfly nymph, c.2004. Height 260. See page 8. \$750

112

**A selection of angler's miscellany ex. Keith Draper's 'Tackle House'**, including two line winders, line, casts, cleaner and dressing. \$80

113

**A selection of angler's miscellany ex. Keith Draper's 'Tackle House'**, including Thompson fly tying vice and Wheatley fly tin. \$80

114

**A selection of angler's miscellany ex Keith Draper's 'Tackle House'**, including a fly tying vice and a Wheatley fly box owned by Erik Kjer. \$80

115

**A J.A. Walker two-piece split cane trout rod**, 'The Aorangi', made for W.H. Tisdall. In bag. \$100

116

**A J.W. Young 3½" alloy trout reel**, made for A & W McCarthy (Dunedin), with centre pin locking screw, fixed ratchet, smooth brass foot, composite handle, nearly all original finish, c.1938 See page 8. \$120

117

**A Walker Brampton three-piece split cane trout rod 'Jo Frost Gem'**, with twist lock joints, good condition, c.1940. \$120

118

**A Hardy Bros. alloy brass and stainless steel two-draw salmon gaff**, with belt clip and tip protector. Royal coat-of-arms and Prince of Wales feathers logos. Length 590. \$150

119

**A Hardy Bros. 3½" 'Silex Major' reel**, with W.H. Tisdall's 'horseshoe' label affixed to back plate, two ivory handles, line tension regulator, free spool rim lever. Foot repaired and replaced. See page 8. \$200

120

**A Hardy Bros. 4" Birmingham plate wind reel**, solid brass, smooth brass foot, horn handle. Slight surface wear, ratchet does not always engage. \$130

121

**A framed Kilwell fly display board**, 'off the wall' from Bob Sullivan's Taupo Sports Depot, c.1950 \$120

122

**A Hardy Bros. 4¼" 'Super Silex' reel**,

with W.H. Tisdall's label affixed to back plate, with ribbed brass foot, ivory line drag control, face plate with two ebonite handles and spool release, line tension regulator and small nut to back plate are absent. See page 8. \$220

123

**A Hardy Bros. 3⅞" 'Perfect' MkII reel**, with W.H. Tisdall's nickel silver name plate affixed inside the face plate, narrow drum model with rim regulator tension screw, ebonite handle, grooved brass foot and agate line guide. See page 8. \$250

124

**A Farlow's 4¼" salmon reel**, stamped 'The B W-P Fly Reel, New Zealand', with sliding drag button, smooth brass foot, replaced ebonite handle, original silk line, c.1925. \$160

125

**Lawrence C. Earle (U.S.A. 1845-1921)**, 'Waiting for the Fishing Party' colour print, c.1891. 590 x 400. \$225

126

**A W.H. Tisdall's two-piece split cane rod 'The Makuri'**, c.1940. In original bag. \$150

127

**A vintage Canadian Gadwall carved wooden decoy duck**, with dark paint finish and glass eyes. Length 380. \$250

128

**A W.H. Tisdall 'Rotoiti' three-piece split cane trout rod**, with spare tip and canvas bag. \$125

129

**A Mappin & Webb boxed part knife set**, the oak box with two layers, a carving set and an incomplete knife set, all with ivory handles. Provenance: The Flower Family Collection. \$350

130

**A large pewter lidded flagon with anthemion thumbpiece**, c.1790. Height 270 \$125

131

**A large old circular copper tray**, with restrained engraved decoration and suspension ring. Diameter 660. \$100

132

**A copper food mould**, domed, eight-petal pattern. Diameter 260. \$100

133

**A heavy copper preserve pan**, with wrought iron swing handle. Diameter 300. \$150

134

**A heavy 19thC brass preserving pan**, with high sides and a steel swing handle. Diameter 340. \$120

135

**A Cornishware rolling pin**, the personal rolling pin of Tui Flower. \$200

136

**A Victorian patriotic painted milk glass rolling pin**, dated 1856. Length 400. \$100

137

**A Bausch & Lomb Optical Co. brass microscope in mahogany case**, with

three objective lenses and with a selection of eye pieces, c.1900. \$350

137A

**A 19th century Renaissance Revival casket**, by Edward & Sons, Glasgow & London, the cruciform vaulted upper section with relief celluloid panels depicting classical allegories, raised on a lower section of square section overlaid in finely patterned celluloid panels, the whole embellished with cut brass filigrees. The upper section opening on hinges to reveal an interior fitted with red satin drawstring work bag and red velvet lined compartment. 185 x 185 265 See page 8. \$850

138

**Two Indian bronze hanging oil lamps (thookku vilakku)**, Kerala region, the larger with eleven wicks, the smaller with seven. Larger diameter 270. \$160

139

**A Victorian pink glass and brass kerosene banqueting lamp**, the glass base and reservoir decorated in polychrome enamels with floral patterns, the burner with twin wick. Height (incl. chimney) 600. \$150

140

**A large Victorian kerosene lamp faceted clear glass reservoir**, decorative primrose yellow column stand. \$150

141

**A cast iron Scandinavian olbolle (drinking vessel)**, of Viking longboat form, probably Norwegian. Length 175. \$80

142

**An early 20thC surveyor's staff**, double extension, original scale. Height unextended 1605. \$140

143

**An early Mickey Mouse toy**, with wire framed plush and felt body, height 145; along with a Mickey Mouse fold-out Christmas card; 'The Adventures of Mickey Mouse' Book Number 2 and 'Shirley Temple Twinkletoes (So you'd like to dance, would you?)'. \$150

## MILITARIA

144

**An early 1900s Artillery Volunteer's helmet**, blue cloth with brass helmet plate, surmounted by a ball finial and with chain chinstrap, with maker's label. \$300

145

**An 1862 Tower three-band musket**, restocked in walnut, with ramrod, elevator sights and new trigger guard. Length 1400. No license required. \$600

146

**A rare U.S.A. High Fleet 'Entertainment Medal'**, November 13th, 1905, with original suspension bar and ribbon in two different pieces, together with a silk handkerchief. This medal was produced to commemorate Edward VII's 2nd Cruiser Squadron visit to New York. \$200



147

**A set of medals and documents to New Zealander Cpl. Raymond Venz**, N Z Medical Corps late NZ Engineers. Venz served at the 4th New Zealand General Hospital in New Caledonia. On 9 July he returned to New Zealand where he spent time in Blenheim and Christchurch. After serving at New Zealand general hospitals he returned for a final deployment overseas between August and December 1945. Includes medal set, military felt pennants, pay book, passport, photos, St John certificates and his pilot's logbook as he qualified as a private pilot post-war. \$200

148

**The medals and ephemera of Cliff Banham**, a New Zealand representative soccer player who served in the Grenadier Guards during WWII. He received dispensation to leave the Guards and play for Halifax before settling in New Zealand, whom he represented as an All White in 1952. \$120

149

**Three RFC sweetheart badges**, various designs. \$130

150

**Three RFC sweetheart badges**, various designs. \$120

151

**Two RFC 'Sweetheart' badges**, together with a RNAS badge, various designs. \$130

152

**A collection of four Royal Air Force 'Sweetheart' brooches**. \$160

153

**Two WW1 photograph albums of 13/583 2nd Lt. Ernest Arthur Bunkall**, of the Auckland Mounted Rifles, Imperial Camel Corps and the Royal Flying Corps. A solicitor from Buckland Road, Epsom he served at Gallipoli as a Trooper before being involved in engagements with the Auckland Mounted Rifles and Camel Corps in Palestine. In March 1918 he was accepted in the Royal Flying Corps and was one of a small number of New Zealanders who served as a Pilot. These two unpublished albums include extremely rare and important images of Bunkall and numerous named colleagues at Gallipoli and in Palestine. Very few images of the Camel Corps have surfaced, and one album is almost entirely in relation to that service. Of particular importance are the photos that relate to the battle at Beersheba in present day Israel. See page 8. \$3,000 - \$5,000

154

**A collection of 16 photographs relating to the NZ Mounted Rifles in Palestine including one of the few known images of the Bedouin village at Surafend**, which was massacred by men of the NZ Mounted Rifles in retaliation to the killing of one of their men by a villager

who was caught by the soldier trying to steal from his tent. At one stage 200 men of the NZMR were to be collectively charged with a war crime. They were found to have massacred perhaps 100 male occupants of the village. No one was charged although New Zealand was made to make a monetary settlement. Each photo entitled in ink. See page 8. \$400

155

**Three photographs of the surrender of German and Italian Generals to New Zealand General Freyberg**, in Tunisia on 13 May 1943. \$200

156

**The personal photograph albums of the onetime Prime Minister Sir Joseph Ward**. During WW1 he formed a coalition government with William Massey. These albums largely relate to the historic trip to the UK and Europe in 1919 during which he attended the Paris Peace Conference. The albums include official images as well as candid photographs of Ward and his family. \$3,500 - \$4,500

157

**The wartime photographs and documents of 4521 Warrant Officer 2nd Class Les Williams, NZ Petrol Company**. A defender of Galatos and Pink Hill at Crete. The Petrol Company became unlikely heroes at Crete. In the afternoon of the first day whilst defending the right flank of Pink Hill, Les Williams suffered significant shrapnel wounds to his stomach, shoulder and arm and was evacuated from Suda Bay a few days later. He went on to serve in North Africa and Italy. This lot includes an album of photos including Crete and North Africa as well as many unmounted images and documents. In later years Mr Williams was interviewed by a school boy and journalists and some of these videos and newspaper reports are included. \$1,000 - \$1,500

158

**A WW2 pocket diary of 42795 Lieutenant Cuyler A.L. de Vere on the NZ Armoured Brigade / Anti Tank Coy**, covering his 1945 service in Italy, recordings for most days together with extra notes and addresses. See page 8. \$400

159

**The historic diary kept by 39065 Lt. (later Captain) Edward Vere Hayward of 28th Maori Battalion**. This is a very detailed diary, making much mention of the engagements of the 28th Maori Battalion such as Minqar Qaim. Hayward was a popular and well-known officer and accompanied General Montgomery in Rotorua in 1953. Few, if any, 28th Battalion diaries survive. See page 8. \$1,000 - \$1,200

## — ARTEFACTS , TRIBAL — & NZ HISTORICAL

160

**An antique Indonesian knife with a carved animal head handle and original scabbard**. Minor faults. Length 440. \$80

161

**A tall slender African ivory tusk**, carved in the image of a young religious woman with rosary and hands clasped. Height on simple wood stand 500. \$400

162

**A small circular basket work ivory box with wood lid and base**. Height 80. \$100

163

**An African carved wood fetish figure**, standing man with snake, painted face and studded with nails. Congo. Height 550. \$250

164

**A pair of old African ebony bookends**, the busts of tribal women. Height 180. \$120

165

**A large heavy Vanuatuan ceremonial pig killer**, tropical hardwood carved with two faces and notched borders. Southern Malekula. Length 800. See front cover \$200

166

**A Fijian tabua (whale's tooth pendant)**, semi-polished weathered surface. Length 150. See page 8. \$180

167

**A pre-European Maori patu muka (stone pounder)**, of traditional form with well defined features, peaked reduced grip, flared butt end, the pounding surface worn smooth and of good dark tone. Reg. Y20381. Length 220. See page 8. \$400

168

**Anton Seuffert (1815 - 1887) New Zealand woods glove box**, of traditional long rectangular form, the mildly domed lid inlaid with central scroll framed cartouche of maiden hair fern decoration, framed by two encircling Greek key bands. Bone inlaid keyhole escutcheon, rewarewa lining to the hinged lid. 29 x 103 x 75. Original 'A. Seuffert Cabinet Maker' label to the interior. Provenance: The Flower Family collection. See page 8. \$6,000 - \$8,000

168A

**A N.Z. Land Wars cannonball**. \$100

169

**An early 20thC Maori carved folk art warrior**, in confronting semi-kneeling stance with taiaha poised, tongue extended and eyes wide, original dark red/brown staining with black, white and red painted highlights, raised upon a rectangular carved block base and four corner supports, paua eye inserts. Illustrated in the publication 'All Our Own Work, N.Z.'s Folk Art' by Richard Wolfe 1997, page 92. Note: the



108



116



119



122



123



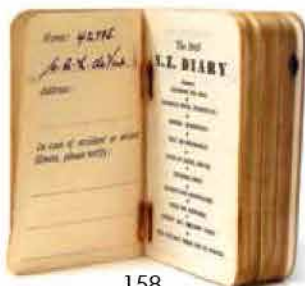
153



111



154



158



137A



178



156



167



179



159



166



817



168



169



172



186



194



208



stance on this figure being very similar to that on the N.Z. one shilling coin, first issued 1933 and designed by George Kruger Gray. It is noted that his inspiration came from the Hector Medal, first awarded c.1912. Repair to left hand. 190 x 460 x 410. See page 8. \$800

**170**  
**A modern Maori pounamu hei tiki**, the right hand to chest, left to thigh, good deep profile, dark green tone. Height 111. \$450

**171**  
**Two c.1900 N.Z. medallions**, a silver 1908 'Auckland N.Z. to Commemorate Visit of American Fleet', a battleship to the front, crossed flags to the reverse; the other '1900 Exhibition, Canterbury Industrial Exhibition'. Diameter 19. \$160

**172**  
**A rare N.Z. Crowther Parnell & Newmarket (Fare) copper token**, the centre detailed 'Line of Safetys', the front with issuer's name and 'Return Bearer'. Diameter 27. See page 8. \$250

**173**  
**Two folios of electoral maps of the North and South Islands**, hand coloured, sectioned and mounted on fine linen, c.1907. The electoral districts detailed by hand and both with blue Morocco bindings. \$250

**174**  
**A mid-20thC needlework embroidery of a Maori princess**, stitched in colours, framed under glass. 375 x 340. \$160

**175**  
**A WWI period N.Z. colonial chip art carved tray**, the central horse head image framed by 'AKE AKE'. 675 x 390. \$200

**176**  
**A Titian pottery green glazed ashtray**. Painted marks. Length 110. \$80

**177**  
**Three cartoons**, Minhinnick 'Show Business', Johnstone 'Five Seconds Mr Lange' and Hunter 'Sorry Sir...'. Various sizes. \$200

## ————— NZ STUDIO ART —————

**178**  
**A Crown Lynn trickle glaze Mickey Mouse jug**, in denim blue tones, with fraction mark to base, original label stating it was a Xmas gift 1947. Provenance: The Flower Family Collection. Height 110. See page 8. \$350

**179**  
**A Crown Lynn Specials Department vase**, attributed to Frank Carpay, baluster form with blue repeating leaf type all-over pattern, printed Crown Lynn mark to base. Height 220. See page 8. \$250

**180**  
**A Crown Lynn large white swan**, with printed mark, impressed number and original shop label to base. 260 x 240. \$200

**181**  
**A Crown Lynn small Hand Potted #3 vase**, traditional matt white glaze, printed mark and incised number. Height 130. \$140

**182**  
**An uncommon Crown Lynn 'Three Faces of Eve' table lamp**, the three faces supported upon each other in an Art Deco design, square base. Overall matt cream glaze. Height 315. \$350

**183**  
**Mirek Smisek shino glazed flared bowl**, incised sculpted rim, pedestal foot. Diameter 255. \$140

**184**  
**A good large Mirek Smisek salt glazed floor pot**, the elongated ovoid body with flared top rim impressed with a repeating pattern. Impressed potter's mark, c.1970s. Height 552. \$800 - \$1,000

**185**  
**A large Barry Brickell lidded floor pot**, the ovoid body with two lug handles, the repaired domed lid with pooled glaze to the knop handle, speckled tan/brown glaze with paler highlights, impressed mark to base, c.1970s. Height 515. \$550

**186**  
**A Luke Adams striped majolica glazed jardinière**, blue and green dominant tones, unmarked. Height 185. See page 8. \$220

**187**  
**A Flora Christeller plate**, with native pterostylis orchid design. Diameter 243. \$80

**188**  
**A David Brokenshire stoneware sculpted seascape wall hanging**, mounted on board. 1970. 930 x 370. \$200 - \$300

**189**  
**A Paul Winspear plate**, 1991. Diameter 280. \$100

**190**  
**An Edgar Camden (Aldermaston Studio UK) 'Whale bowl'**, c.2000. Diameter 240. \$120

**191**  
**A Betty de Lange, lidded jar and two candle stands**, from the 'Unica' Experimental Department of De Porceleyne Flees, Holland where Anneke Borren worked in 1967/68. Provenance: The Anneke Borren collection. \$120

**192**  
**An Ann Wynn Reeves (Ann Clark), pottery house**, signed AC 73. 150 x 150 x 200. \$120

**193**  
**A Jenny Browne crystalline plate**. Diameter 380. \$80

**194**  
**A Mike O'Donnell, Tarariki Pottery, chawan tea bowl**. Height 100. \$70

**195**  
**A Duncan Shearer clay bottle**, salt glazed, 2014. 95 x 170. \$50

**196**  
**A Duncan Shearer salt glazed tall ewer**. 2000. Height 340. \$100

**197**  
**An Anneke Borren seahorse money box**, 1987. Height 360. \$50

**198**  
**An Anneke Borren tall 'floating vase'**, stoneware, 2004. Height 370. \$150

**199**  
**An Anneke Borren brown vase**, stoneware, 2009. Height 340. \$150

**200**  
**A Katie Gold large Captain Cook standing boat vessel**, flat strips of woven and wrapped clay form a boat shape atop a conical shaped base, depicting a map of New Zealand, plant forms and pohutakawa, in vibrant colours, signed. Height 460. \$250

**201**  
**A Sandra Black (Aust) porcelain sculpture 'Requiem to My Mother'**, signed and dated 1989. A similar work by Black won the Fletcher Challenge Ceramics Award in 1988. Height 510. \$200

**202**  
**A Louise Rive (Edge City - Westmere), 'The Conversation' a pair of porcelain female figures**, heights 340 and 410, both signed. \$500

**203**  
**A Doris Dutch – a rare double necked vase**, with mottled greenish/brown glaze, impressed monogram. Height 210. \$100

**204**  
**A Peter Lange, 'Broken Brick' teapot** with 'sink plug' lid. Original paper label attached. Height 185. \$250

**205**  
**A Peter Lange, 'Stacked Sponges' teapot** with 'piece of rock' lid. 'Lange' written on the side near the base. Height 115. \$250

**206**  
**A Peter Lange, 'Lion Beer Can' teapot** with 'sink plug' lid. Height 195. Old labels on base. \$300

**207**  
**A Juliet Peter salt glazed bowl**, circular foot ring, striking blue glaze. Impressed potter's monogram. Diameter 260. \$180

**208**  
**A John Higgins (England) Studio Pottery vessel, 'Morocco'**, curved slab construction, coloured glazed panelled sections. Purchased at the Fletcher Challenge Ceramics Awards 1998, catalogue entry 75. Note: John Higgins ceramic vessels refer most often to architecture, archaeology and everyday objects. The techniques of slab forming and throwing are used, the clay is heavily grogged to withstand the unusual methods of making and the surfaces are treated simply with slips, stains and oxides. Higgins has an international reputation and is noted for bringing a freshness and

freedom to British ceramics with his first exhibition in 1979 representing the U.K. at the 37th Concorso Internazionale Della Ceramica d'Arte. 500 x 200 x 440 approx. See page 8. \$850

209

**An Aaron Scythe 'Te Aroha Oribe' ceramic keke.** Height 430. See page 13 \$350

210

**A Tatsuzo Shimaoka stoneware dish,** decorated with cord impressed pattern. Diameter 205. \$250

211

**An Elizabeth Lissaman earthenware dish,** decorated with two exotic birds, incised signature and date code for 1972. Diameter 280. \$275

212

**A Patricia Perrin pottery coffee pot and cream jug,** the pot of ovoid shape, the creamer of kendi shape, tiny chip to spout. Height 165. \$120

213

**Three small bronze sparrows.** Each length approx. 120, all signed. \$200

214

**Slim Barry, untitled, portrait bust sculpture,** cardboard construction, initialled and numbered 164 on reverse, painted highlights. Purchased Bowen Galleries, Wellington, c. early 2000s. Height 500. \$200

215

**A Len Castle bird-form sculpture.** Impressed monogram and '98'-the year it was made. Purchased from the potter. Width 270. \$200

216

**A Len Castle Sea Secret (sponge).** Impressed monogram. Purchased 203 from the potter. Length 220. \$200

217

**A Len Castle 'Sea Secret',** with interior turquoise glaze. Impressed monogram. Purchased 1998 at his exhibition 'Len Castle New Ceramics - Earth Books & Sea Forms' at Lopdale House. Diameter 170. \$200

218

**A Len Castle Twig Vase** (Grass Pot or Sedge Pot), pinched form, impressed monogram. Height 95. \$80

219

**A Len Castle, 'Crater Lake Bowl',** earthenware with alkaline copper glazed well, impressed artist's cipher. Diameter 455. \$800

220

**A Len Castle, 'Red Lava Bowl'** earthenware with bright red glaze, impressed with artist's cipher. Diameter 405. \$450

221

**A Len Castle, large 'Red Lava Bowl',** earthenware with bright red glaze, impressed artist's cipher. Diameter 540. \$550

222

**A Len Castle, small alkaline blue bowl,**

impressed artist's cipher. Diameter 210. \$100

223

**A Len Castle, small 'Red Lava Bowl'.** Diameter 225. \$120

224

**A Len Castle pouring bowl,** with ash glaze and tenmoko rim, along with two small dishes with similar glazing, all with impressed potter's mark. Largest diameter 200. \$225

225

**A Len Castle press moulded dish,** rounded oblong shape, decorated with gestural resist pattern to the centre, ash and tenmoko glazed, impressed artist's mark. 310 x 280. \$250

226

**A Len Castle press moulded dish,** rounded oblong shape, the centre decorated with an impressed pattern, ash and tenmoko glazed, impressed artist's mark. 310 x 265. \$250

227

**Len Castle stoneware jug,** baluster shape with ash glazes, impressed artist's cipher. Height 140. \$80

228

**A Garry Nash red chip bowl,** shallow centre with wide rim, etched signature and date to base. Diameter 400. \$150

229

**A Garry Nash Kākābeak/ngutu kākā pattern glass vase,** black overlaid red colour-way. Signed and dated '15. Height 280. \$350

230

**Garry Nash blue forget-me-not vase,** cylindrical shape, azure blue overlaying mottled blue reef interior visible through the cut-away pattern. Signed and dated '15. Height 220. \$225

231

**A John Croucher, 'Red Wind', flattened circular glass vase,** signed, entitled and dated 1986. Height 250. \$150

## GLASS

232

**A Stuart etched crystal Claret jug,** together with a matching decanter. \$150

233

**Two Stuart etched crystal jugs,** matching above. \$100

234

**Nine Stuart etched crystal tumblers,** matching above. \$150

235

**12 Stuart etched crystal wine glasses,** matching above. \$200

236

**12 Stuart etched crystal sherry glasses,** unusual conical bowls, matching above. \$100

237

**13 Stuart etched crystal small wine glasses,** seven matching above and

six with slightly different decoration and gilded rims. \$100

238

**An early 20thC American pattern Vaseline glass boat on stand,** pale green with opalescent highlights, an encircling band of repeating square starburst pattern, the stand with basket weave type relief surface. Length 390, minor chipping. \$200

239

**A c.1880 quality French blue glass and enamelled vase attributed to Baccarat,** rectangular baluster form, finely enamelled with rooster, hen and other birds among blossoms and bamboo, showing Aesthetic Movement styling, gilt highlights. Height 210. Note: An international glass specialist has noted this piece as being 'probably Baccarat, c.1880'. See page 13 \$300 - \$400

240

**A pair of antique Bohemian flashed glass vases,** with cut decoration, cobalt blues with gilt embellishments. Provenance: The Flower Family Collection. Height 320. \$230

241

**A pair of frosted Depression glass figural candlesticks,** the man and woman in country dress with baskets on their head. Provenance: The Flower Family Collection. Height 250. \$180

242

**A Scottish mid-century glass vase,** tapering cylindrical, etched with a design of Romeo and Juliet. Height 225. \$150

243

**12 Waterford crystal champagne flutes,** Lismore pattern. \$350

244

**11 Waterford crystal wine glasses,** Lismore pattern. \$420

245

**12 Waterford crystal small wine glasses,** Lismore pattern. \$250

246

**12 Waterford sherry glasses,** in the Lismore pattern. \$200

247

**A selection of Waterford crystal glasses,** includes two brandy glasses and 15 assorted sizes, in the Lismore pattern. \$150

## —MODERN MOVEMENT—

248

**A good Gallé c.1900 cameo glass atomizer scent bottle,** the tall tapered ovoid body with single purple overlay on a frosted clear ground, finely carved with floral and leaf designs, cameo cut signature, the gilt metal fitted top mount stamped 'Made in France' and with original internal long glass tube, woven gold fabric cover to the external atomizer connection, tassel fringe. Height 162. See page 13 \$1,400 - \$1,800



249

**An Art Deco heavy malachite glass Buddha**, traditional lotus position. Height 200, width 150. \$220

250

**An Art Deco Czech crystal decanter and six glasses**, decorated with ruby flashed and cut geometric pattern. See page 13 \$300

251

**A Tudric pewter Archibald Knox bombe form vase**, shape #0226, three vertical ribs to the fin form feet. Height 190. See page 13 \$450

252

**A Tudric pewter Archibald Knox design vase**, narrow tapered form with three fine rib form curving handles, splayed base, the green glass liner by Powell, A.F. Height 220. \$220

## — CHINA & PORCELAIN —

253

**A Lladro figure group**, a soldier making overtures to a young lady. Height 440. \$250

254

**A Lladro figure group**, 'A Rickshaw Ride', 1978-2005, by Salvador Debón, with stand. Some minor losses to flow-ers in hair and repair to the parasol. 350 x 300. \$450

255

**A Lladro figure group**, an old sailor showing a model boat to a young boy. 230 x 290. \$350

256

**A Lladro figure group**, 'Pious', 1989-1991, by Salvador Furio, with stand. 360 x 300. \$550

257

**A Lladro figure group**, 'Rest in Coun-try', 1971-1981, by Salvador Furio. 320 x 300. \$550

258

**A Lladro figure group**, 'Motoring in Style', 1992-1997 by Francisco Català, with stand. 470 x 300. \$850

259

**A Lladro figure group**, 'A Sunday Drive', 1987-1992, by Salvadore De-bón, with stand. 400 x 390. See page 13 \$850

260

**A large Lladro figure group**, 'At the Fair', 1987-1994, by Antonio Ramos, on stand. Length 630. See page 13 \$1,200

261

**A large Lladro figure group**, 'On-ward!', 1991-1993, by Salvador Debon, on wooden stand. Length 640. See page 13 \$1,200

262

**A William Moorcroft early Pansy de-sign vase**, baluster form, the encircling band of decoration with white glaze above and cobalt blue below, full sig-nature in green and impressed marks to the base. Height 190. \$500

263

**A large Walter Moorcroft 'Anemone' pattern baluster vase**, Impressed marks. Height 255. \$450

264

**A Walter Moorcroft Hibiscus pattern baluster vase**, on a green ground. Im-pressed marks and paper label. Height 190. \$250

265

**A large Walter Moorcroft Hibiscus pat-tern baluster vase**, on a blue ground. Impressed marks and paper label. Height 360. \$650

266

**A pair of Royal Doulton bookends**, Sherlock Holmes and Dr Watson. 145 x 90 x 185. \$250

267

**A pair of Royal Doulton bookends**, 'Laurel and Hardy', No. 823 of 2500. 140 x 90 x 180. \$250

268

**A Royal Doulton white bone china two-handed baluster vase**, painted with women and geese. Printed mark. Height 200. \$150

269

**A Royal Doulton white bone china balus-ter vase**, painted with man and turkeys. Printed mark Height 210. \$175

270

**A Royal Doulton 'A Midsummer Night's Dream' bowl**, large octagonal form, alternate panels named 'Bottom' and 'Snout', D2874. Diameter 250. \$120

271

**An Edwardian Doulton Lambeth tea caddy**, tube lined motto to one panel 'Honest Tea is The Best Policy', sculpted leaf and floral designs, silver remov-able cover, top fitting and plain shield cartouche. Chester 1904, impressed maker's and artist's marks to base. Height 160. See page 13 \$300 - \$400

272

**A Royal Doulton 'Old Proverbs' jug**, the two side shield cartouches including different proverbs. Height 230. \$120

273

**A Doulton Lambeth 'Gladstone' jug**, transfer decorated with portrait and accolades. Height 185. \$120

274

**A Royal Doulton 'Teniers Tavern Scene' jug**, broad rim. Height 190. \$100

275

**A Doulton Morrisian Ware vase**, c.1905, decorated with dancers, leaves and fruit on cobalt ground. Small restora-tion at foot. Height 150 \$100

276

**A Royal Doulton Pansy jug**, printed mark to base. Provenance: The Flower Family Collection. 100 x 135. \$150

277

**A Doulton commemorative jug**, deco-rated with portraits of Geo. Giffin, W.G. Grace and K.S. Ranjitsinhji; famous ear-ly cricketers, in sepia tones, impressed

mark to base. Provenance: The Flower Family Collection. Height 180. \$150

278

**Royal Worcester Highland Cattle painted urn form vase by H. Stinton**, signed, ornate gilt enrichments, shape 1969. The printed mark post 1963. Height 310. See page 13 \$2,600

279

**A Royal Worcester cream jug**, hand painted with fruit, the base, interior and handle lavishly gilded, signed 'Austin'. Provenance: The Flower Fam-ily Collection. \$120

280

**A Belleek Henshall twig basket**, the base with four strand ribbons, the rim with fine detailed flowers, impressed marks to base. Provenance: The Flower Family Collection. 220 x 170. \$180

281

**A Clarice Cliff Bizarre jug**, Crocus pat-tern, 'Bonjour' shape, hairline crack to side, label to base '1932'. Provenance: The Flower Family Collection. \$150

282

**A Grimwades Maoriland cream jug**, with 'Pa Gateway' scene. Provenance: The Flower Family Collection. \$120

283

**Two vintage Japanese Mickey Mouse jugs**, of graduating size, one with label 'Christmas 1944', the other 'Christmas 1936'. Provenance: The Flower Family Collection. Height 135 and 115. \$180

284

**A vintage Australian pottery jug**, decorated with gum nuts and leaves, signed E. Bryce Carter, Sydney 1938 to the base, together with a pair of matt green glazed candlesticks, signature to base. Provenance: The Flower Fam-ily Collection. 60 x 60. \$120

285

**An antique creamware food warmer**, the cylindrical stand with large han-dles, pierced decoration to the front over the hole which gives access to the metal spirit burner, the warming container sits in the stand with twisted side handles, a spout, the lid with acorn finial. Height 280. \$150

286

**An early 19thC Wedgwood cream-ware dish**, lobed oval form, pierced rim, impressed maker's mark to base. Length 280. \$120

287

**An early 19thC Prattware mask jug**, the head of Bacchus with painted polychrome decoration and monkey handle. Height 180. \$175

289

**An early 20thC polar decorated plate set**, comprising a long rectangular serving dish and seven octagonal side plates, all transfer decorated and hand coloured with various polar scenes including sealers, steam boats under sail and captured by ice, en-

campments, stations, flags, icebergs, etc., all framed by a bright blue border with fine floral garlands and gilt enrichments, each transfer mark to the reverse 'Trade-Mark' above an 'L' within scrolls. Two side plates with minor damage. \$800

290

**A Victorian Parian figurine**, two owls perched on a branch, tree trunk receptacle to front for matches, 'Matchmaking', Victorian registration diamond to reverse. Provenance: The Flower Family Collection. 140 x 130 x 200. \$150

291

**A Victorian Parian bust**, 'The Hop Queen', on socle base with impressed stamps to reverse, 'Ceramic & Crystal Palace Art Union', etc. Provenance: The Flower Family Collection. Height 350. See page 13 \$250

292

**A Victorian Parian bust**, 'The May Queen', on socle base, stamps to reverse, 'Ceramic & Crystal Palace Art Union', etc. Provenance: The Flower Family Collection. Height 320. \$250

293

**A Victorian Parian bust**, a young lady with roses in her hair and a bird to her shoulder, on socle base, unmarked. Provenance: The Flower Family Collection. Height 280. \$200

294

**A Victorian Parian figurine**, a young woman in classical Greek dress in pensive pose holding a small urn, unmarked. Provenance: The Flower Family Collection. Height 350. See page 13 \$200

295

**A Victorian Parian figurine**, 'Musidora', stamped and marked to reverse 'Ceramic & Crystal Palace Art Union', etc. Provenance: The Flower Family Collection. Height 430. See page 13 \$250

296

**A Victorian Parian figurine**, 'Marguerite', stamped marks to base, 'S. Terry, SC.1868', etc. Repair to base. Provenance: The Flower Family Collection. Height 540. \$150

297

**A Victorian Parian figure of an Elizabethan woman**, stamped to base 'Ceramic & Crystal Palace Art Union', etc. Provenance: The Flower Family Collection. Height 360. \$180

298

**A Victorian Parian figure**, 'Fire', with stamped marks to base. Damage to one torch. Provenance: The Flower Family Collection. Height 830. \$120

299

**A Victorian Parian bust**, the head of Apollo, on socle base. Provenance: The Flower Family Collection. Height 280. \$180

300

**A Victorian Parian figure**, '6 a.m.', a young boy cleaning boots. Provenance: The Flower Family Collection. Height 290. \$150

301

**A pair of Victorian Parian figures**, a boy and girl in country dress, the boy with basket, the girl holding her apron up, unmarked. Provenance: The Flower Family Collection. Height 230. \$250

302

**A Victorian 'Palissy ware' wall plate**, decorated with toads and lizards on a grassy ground. Provenance: The Flower Family Collection. Diameter 210. See page 13 \$250

303

**A Victorian 'Palissy ware' jug in stand**, decorated with lizards on a grass ground, the handle in the form of a large green lizard, the stand with impressed marks for Portugal. Provenance: The Flower Family Collection. Height of jug 270. \$350

304

**A William Ault Majolica Toby jug/decanter**, commemorating peace at the end of WWI, impressed mark to base. Provenance: The Flower Family Collection. Height 250, crack to newspaper. \$150

305

**A Majolica wall vase**, in the form of a kingfisher with fish in mouth standing on water lilies, impressed numbers to back. Provenance: The Flower Family Collection. 200 x 280. \$200

306

**A pair of Victorian mantel vases**, the front panels painted with a Victorian lady in a gilded border on pink ground. Chip to rim of one vase and some gilt missing from the other. Provenance: The Flower Family Collection. Height 360. \$220

307

**An Italian retro ceramic platter**, asymmetrical oval shape, painted in bright enamels with a still life of fruit. 515 x 310. \$125

308

**A graduated set of three vintage French lidded casserole pots**, mustard ground with brown handles and trim. \$200

309

**A collection of vintage French pottery bowls**, various coloured decoration. \$200

310

**Two large vintage French lidded casserole pots**, one blue, the other with green, blue and brown decoration on mustard ground. \$200

311

**An old Chinese lacquered carved wood figure of Kuanyin**, in serene standing pose. Height 670. \$300

312

**A Chinese spinach green jade hanging scroll**, the multiple slender oblong jade bars decorated with gilded calligraphy. Red seal mark at the base. In teak box, the lid with silver wire inlay. Width 240, length 940. Damage to some bars. \$1,000

313

**A vintage Chinese silver opium tool chatelaine**, the decorative chain links with fish highlights, fine various tools suspended. Length 380. \$200

314

**A large Chinese white marble head of Buddha**, on simple octagonal wood plinth base. Height overall 3750. See page 13 \$450

315

**An old Chinese cinnabar lacquer circular lidded box** with profuse relief decoration, character marks on base. Diameter 220. \$400

316

**A vintage Chinese finely carved ivory tusk**, the extensive landscape including figures, trees, temples, boats, etc., raised on a wooden stand. Length 410. \$650

317

**Three Chinese snuff bottles**, one inside painted with horses, another of serpentine jade carved with a peacock, the third of serpentine jade carved with characters and qilin. \$120

318

**A pair of Chinese snuff bottles**, decorated with dragons in grisaille, c.1900. Illustrated 'Allen's Antique Chinese Porcelain, The Detection of Fakes'. Height 75. \$150

319

**A Sino-Tibetan gilt bronze bodhisattva**, seated in earth-touching pose on plinth base. Height 280. \$350

320

**An old Chinese seal of shoushan stone**, carved in low relief with water lilies. Height 65. \$110

321

**A Chinese bronze square seal**, surmounted by two dragons, the calligraphy translated as 'How can greater satisfaction be achieved but by cultivating an immaculate heart'. 45 x 45 x 35. \$250

322

**A pair of inlaid bronze tiger tallies**, used as authentication of messages from the Emperor and his troops, inlaid with calligraphy for the dispatch of troops, the left side to the Emperor, the right side to Changsha (in present day Hunan Province). Length 90. \$500

323

**An old Chinese coin mould**, square dish shape with obverse and reverse features of two coins under the base with archaic calligraphic marks, trans-

## ORIENTAL





209



239



248



249



250



251



259



260



261



271



278



291



294



295



314



302



330



326



327



331



328



332



335



336



339



340



341

lated as 'Unlimited Wealth and Courage'. 85 x 85 x 10. \$100

324

**A Chinese polished bronze seal set**, of five interlocking metal seals and one of wood. 40mm square. \$250

325

**An old Sino-Tibetan metal stopper shaped scroll weight**, set with jade panels and ruby(?) cabochons and surmounted by a lapis lazuli figure. Height 165. \$150

326

**A fine antique Chinese ivory vase and cover**, of tall ovoid shape with lion mask captured ring handles to the neck, the body intricately carved in relief with a celestial garden populated with numerous figures of deities, attendants, sages and children visiting temple buildings, raised on a sectional base with pierced detail and with domed cover surmounted by a temple lion dog. Provenance: The Flower Family Collection. Height 305. See page 13 \$1,250

327

**A 19thC Chinese ivory figure of Hua Mulan**, the woman warrior who took her father's place in the army. The figure raised on a wooden base bears weapons and wears woven armoured robes. Provenance: The Flower Family Collection. Height 270. See page 13 \$800

328

**A Chinese Qing Dynasty period ivory wrist rest**, finely carved to one side in high relief with an allegorical landscape with figures, the other side with calligraphic inscriptions. Provenance: The Flower Family Collection. Height 265. See page 13 \$700

329

**A carved ivory tusk bridge**, with a procession of six elephants of graduated size, raised on a wooden stand. Provenance: The Flower Family Collection. Length 300. \$450

330

**A 19thC finely carved ivory Chinese card case**, the front with cushion shape carved with a celestial landscape framed by a profusion of flowers, the back intricately carved with a complex townscape and gardens. Oblong with serpentine outline. Provenance: The Flower Family Collection. 110 x 70. See page 13 \$500

331

**An early 19thC miniature ivory carving of the goddess Kwannon**, standing holding a basket with a fish, two character signature. Provenance: The Flower Family Collection. Height 64. See page 13 \$120

332

**An old Chinese ivory puzzle ball of ten concentric layers**, the outermost carved with a dragon amongst clouds and birds amongst bamboo, the inner layers carved with various complexi-

ties of diaper patterns, stars, cruciform piercings. Provenance: The Flower Family Collection. Diameter 75. Raised on a turned and pierced pedestal stand. Overall height 200. See page 13 \$750

333

**Two carved ivory 'dream shells'**, one open to reveal figures unloading a boat, raised on plinth stand; the other as a netsuke, with dark tea stained exterior. Provenance: The Flower Family Collection. Largest width 52. \$150

334

**A 19thC Chinese finely carved paper knife**, the handle carved to both sides with figures within a village setting, including buildings and trees, the blade tapering to a point. Provenance: The Flower Family Collection. Length 243. \$150

335

**An old Chinese carved ivory circular lidded container**, the lid finely decorated with a sinuous dragon amongst clouds, dark stained detail, a beetle detailed to the base and interior. Provenance: The Flower Family Collection. Diameter 67. See page 13 \$200

336

**An old Chinese circular lidded container**, similar to above, finely carved with elephants to the lid. Provenance: The Flower Family Collection. Diameter 65. See page 13 \$150

337

**A finely carved hardwood vase stand**, the centre pierced with a dragon, the base with conforming decoration and five scrolling feet. Provenance: The Flower Family Collection. Diameter 220, height 120. \$220

338

**A Chinese agate carved box**, of gourd shape surrounded by leafy twigs, the lids surmounted by a finial of twigs and leaves, raised on a fitted wooden stand. Provenance: The Flower Family Collection. Width 120. \$200

339

**A Chinese carved quartz censer and cover**, of smoky colour, the censer with lion mask captured ring handles issuing from the rim, raised on four short feet and with domed cover surmounted by a temple dog; raised on an associated carved and pierced black wood stand. Provenance: The Flower Family Collection. Height (incl. stand) 175. See page 13 \$300

340

**An old Chinese agate snuff bottle**, carved in high relief with qilin clambering its shoulders, replaced associated stopper of conforming material, raised on a shaped wooden stand. Provenance: The Flower Family Collection. Overall height 85. See page 13 \$120

341

**A 19thC Chinese porcelain snuff bottle**, decorated in famille rose enamels

with Mandarin figures, warriors and courtesans, flattened circular shape with cabochon agate stopper with silver ferrule. Six character Daoguang (1821-1850) seal mark under the base. Minute chip to rim. Provenance: The Flower Family Collection. Height 90. See page 13 and front cover \$300

342

**A Chinese reverse painted glass panel**, depicting the Sanxing, framed. Overall 545 x 390. \$120

343

**A decorative Chinese watercolour**, depicting a Ming blue and white covered jar. Framed and glazed. Overall 520 x 510. \$100

344

**Two decorative Chinese watercolours**, depicting 18thC famille verte porcelain bowls. Framed and glazed. Overall 550 x 550. \$200

345

**Two decorative Chinese watercolours**, depicting Mandarin robes. Framed and glazed. Overall 580 x 610. \$200

346

**A Chinese porcelain plaque**, framed, depicting exotic birds and flowers. Overall 415 x 540. \$175

347

**A decorative Chinese scroll painting of deities and arhats**, in watercolour on silk with calligraphic inscription and seal stamps. Foxed, framed and glazed. Overall 1030 x 700. \$100

348

**A pair of Chinese watercolours**, depicting pairs of egrets amongst reeds. Each framed and glazed, overall 720 x 700. \$250

349

**A decorative Chinese watercolour**, of a green lacquer wedding cabinet, framed and glazed. Overall 600 x 580. \$120

350

**A Chinese Peking glass vase**, flattened ovoid shape with trumpet mouth, pale amber colour with blue glass overlay, cut in relief with panels of ducks, fish and lotus flowers, stiff leaf pattern decorates the neck. Intaglio seal mark under the foot. Height 255. \$350

351

**A Chinese lacquered and gilded metal figure of a scholar**, seated holding a baton of rank, engraved calligraphy to the back of his seat. Height 250. \$350

352

**A Chinese jade bracelet**, of demilune sections alternating with twin spherical small beads. \$150

353

**Chinese Qing period celadon plate**, with Kintsugi gold lacquer repair to breaks and pinned with metal staples. Stylized six-character seal mark in underglaze blue. Diameter 255. \$120

- 354  
**A Chinese wucai style large enamel ovoid vase**, the body of six lobes decorated with sinuous dragon, phoenix and florals amongst clouds, six character mark detailed to base in blue. Height 330. \$700
- 355  
**A pair of moon flask vases**, the circular bodies decorated with panels depicting women in gardens, the tall necks flanked by lizard handles, the background in unusual black enamel decorated with scattered rosettes and gilded scrolls. Multiple character marks under the base. One faulted. Height 450. \$400
- 356  
**A pair of Chinese polychrome porcelain baluster vases**, with mask ring side handles to the shoulders, painted with red and green dragons and with scrolling flowers and stiff leaves at the neck in polychrome. Height 430. \$460
- 357  
**A Chinese porcelain vase**, gourd shape, decorated with cherry blossom, birds and bamboo on a mustard ground. Qianlong seal mark under the base. Height 250. \$220
- 358  
**A Chinese Ming style jar**, tea dust glaze, copy from the Jiajing dynasty, six-character mark to base. Diameter 110. \$600
- 359  
**A Chinese green jade aubergine pendant on a beaded cord**. Length 90. See page 16. \$1,750
- 360  
**A miniature Chinese white jade square section vase/perfume bottle**. Height 45. \$150
- 361  
**A Chinese pale greenish blue baluster vase**, with ring side handles and floral painted decoration. Height 200. \$150
- 362  
**A small Chinese ginger jar** with raised and painted decoration of stalk and water lilies. Height 110. \$110
- 363  
**A Chinese porcelain double gourd vase**, pale lavender/blue glaze, Qianlong seal mark under base. With wooden stand. Height 230. \$100
- 364  
**A Chinese porcelain moon flask vase**, decorated in underglaze blue with exotic birds amongst flowers, the shoulder with qilin handles. Height 260. \$120
- 365  
**A Chinese porcelain kong vase**, pale celadon glaze, with wide crackle, intaglio seal mark under the base. Height 355. \$350
- 366  
**A Chinese porcelain Ming-style wine ewer**, decorated in underglaze blue with figures and flowers. Height 200. \$350
- 367  
**A Chinese porcelain brush pot**, decorated in polychrome enamels with three dragons on a cloudy ground, cylindrical shape, four character mark under the base. Height 120. \$400
- 368  
**A Chinese Ming-style blue and white small jarlet**, squat ovoid shape. Diameter 80. \$150
- 369  
**A small Chinese two-handed porcelain dish** with a crackled dark cream glaze and a brown rim. Diameter 90. \$200
- 370  
**A good quality Chinese porcelain circular shallow dish**, with polychrome enamel decoration of insects, flowers and blossom. Character marks on base. Diameter 260. \$500
- 371  
**A Chinese pale celadon shallow dish** with profuse polychrome enamel decoration of exotic birds, butterflies, flowers, etc. Painted seal mark. Diameter 220. \$140
- 372  
**A Chinese famille rose bowl** with foliate rim and short foot. Diameter 200. \$100
- 373  
**A Chinese Song celadon shallow dish**, decorated with incised lotus pattern beneath the deep olive glaze. Diameter 180. \$200
- 374  
**A Chinese porcelain bowl**, decorated in underglaze blue with eight figures of boys, in the Ming manner. Diameter 135. In Japanese wood box. \$250
- 375  
**Two Chinese Guangxu birthday pattern plates**, yellow ground, six character marks to base of each, one 200mm diameter, Guangxu period, the other 255mm diameter and Republic period. \$125
- 376  
**A Chinese porcelain Imperial yellow shallow bowl**, the egg-yolk yellow glazed bowl decorated with incised decoration to the interior of a dragon amongst clouds framed by two front dragons to the border, six-character Guangxu mark under the base. Diameter 330. See page 16. \$800
- 377  
**A Japanese porcelain shallow bowl**, with heavy crackle glaze on teal colour. Five stilt marks under the foot ring. Diameter 180. \$700
- 378  
**A Japanese celadon glazed plate**, flower head form. Rim chip. Diameter 195. \$100
- 379  
**A pair of Chinese porcelain tazza**, decorated in famille rose and polychrome enamels, with motifs of longevity to the interior and exterior, the rim with square fret border. Qianlong mark under the base. Diameter 190. \$600
- 380  
**A Chinese porcelain bowl**, decorated to the interior and exterior with dragons and ho-o bird, in green and red-brown glazes on an egg yolk yellow ground, Yongzheng six character seal mark under the base. Diameter 215. \$950
- 381  
**A porcelain shallow small dish**, pale celadon glaze with purposeful crackle, five stilt marks under the foot ring. Diameter 120. \$150
- 382  
**A fine Chinese porcelain rice bowl**, decorated with birds and flowers, six character Guangxu mark under the base. Diameter 120. \$150
- 383  
**A Chinese porcelain wine cup**, hemispherical shape, decorated with grape vines and tendrils, Kangxi mark under the base. Diameter 85. \$200
- 384  
**A Chinese fine porcelain wine cup**, flaring cylindrical shape, decorated within polychrome enamels with figures in a river landscape, seal mark under the base. Diameter 80. \$150
- 385  
**A small Chinese porcelain two-handed censer on three sprig feet**, decorated gold speckled tea-dust glaze. Impressed seal mark. Diameter 80. \$150
- 386  
**A Chinese blue and white porcelain lidded writing box** with two compartments, lake and landscape scenes. Length 190. \$120
- 387  
**A Chinese exportware Imari plate**, diameter 260, together with a pair of exportware floral porcelain plates. All have faults. Diameter 230. \$150
- 388  
**A pair of Chinese porcelain parrots**, yellow glaze, firing crack to one, c.1900. Illustrated 'Allen's Antique Chinese Porcelain, The Detection of Fakes'. Height 100. \$150
- 389  
**Allen's Antique Chinese Porcelain**, The Detection of Fakes, published 2015. \$40
- 390  
**A Chinese porcelain censer**, cylindrical shape raised on three mask feet, lug handles issue from the rim, decorated in low relief with animal motifs. Diameter 125. \$200
- 391  
**An old Tibetan finely painted thangka**, the triple gold thread embroidered frame enclosing the fine painted panel with combination of various traditional significant religious figures in various settings, amongst clouds, flames etc. The painted panel measuring 400 x 330. \$800





359



376



396



400



402



403



404



431



405



406



407



408



413



409



410



411



412



418



419



423



415



417



414



421



424

- 392**  
**Mao Keinen (1845-1923)**, 'Winter Scene with Duck', woodblock print from his Bird and Flower album, c.1892. 320 x 220. \$120
- 393**  
**An Indian ivory figure of a dancing couple.** Height on wood stand 201. \$200
- 394**  
**A vintage Indian ivory night light**, ornately carved and pierced with an elephant, lion, birds and grapes, on original ebonised wood stand with old electric cord and fitting. Height 190. \$200
- 395**  
**A long mala bead necklace**, the uniform dark toned rudraksha seeds with central tapered spherical brass bead with plaited yellow cord highlight. Length 860. \$160
- 396**  
**A Tibetan white metal ritual dagger (phurba)**, the finial decorated with three heads surmounted by a coronet of skulls and unicorn, the triform blade issuing from an eagle head. Length 170. See page 16. \$750
- 397**  
**A polished bronze bodhisattva**, seated on lotus throne, together with a brass bat, possibly a sword fitting. Height 120. \$100
- 398**  
**A Tibetan polished bronze Buddha**, seated in meditative pose on lotus throne and plinth. Height 195. \$100
- 399**  
**An unusual Tibetan thangka of re-poussé metal work**, replicating a fabric scroll decorated with a Tibetan deity, Buddha, precious objects and mythical beasts. 340 x 355. \$650
- 400**  
**A Thai bronze buddha**, seated on a lotus throne and raised on wooden plinth base, seated in the earth touching pose. Height 410. See page 16. \$750
- 401**  
**A Japanese Meiji period ivory okimono**, of a man and child seated beneath a bird net where a beetle has alighted and the child tries to reach it with a bamboo pole. Signed with incised two character signature. Provenance: The Flower Family Collection. Height 230. \$700
- 402**  
**A fine Japanese Meiji period small okimono group**, depicting the hero Musashibō Benkei carrying the Mii temple bell accompanied by Daikoku, Fukurokuju, Uzame and child, led by an oni. The asymmetrical base incised with a view of the bell at Miidera and calligraphic script. Two character signature on inlaid red lacquer tablet. Provenance: The Flower Family Collection. Width 62. See page 16. \$400
- 403**  
**An old Japanese ivory netsuke**, as a group of a nio bathing an oni child attended by a dwarf, a child and a sennin. Carved in fine detail, two character signature under the base. Provenance: The Flower Family Collection. See page 16. \$300
- 404**  
**An ivory netsuke of Tanuki**, the badger standing and dressed in the robes of a wandering priest. Two character signature to back. Provenance: The Flower Family Collection. Height 65. See page 16. \$150
- 405**  
**A compact carved old ivory netsuke**, of a shōjō drinking sake from a large bowl. Two character signature. Provenance: The Flower Family Collection. Height 33. See page 16. \$140
- 406**  
**A 19thC ivory netsuke**, carved as a boy clambering over the back of a recumbent bullock, signed on oval tablet under the base. Provenance: The Flower Family Collection. Length 57. See page 16. \$150
- 407**  
**A small ivory okimono**, of a young boy clambering across the belly of an upturned carp. Two character signature. Provenance: The Flower Family Collection. Height 43. See page 16. \$140
- 408**  
**An ivory netsuke**, of a priestess seated upon a temple bell, an oni hiding within. Signed on the bell top. Provenance: The Flower Family Collection. Height 43. See page 16. \$140
- 409**  
**An early 19thC ivory netsuke**, of Okame the goddess of mirth at setsubun (end of year ceremony), pelting two oni with beans who take refuge under and behind her skirts. Signed under the base. Provenance: The Flower Family Collection. Height 52. See page 16. \$180
- 410**  
**A small and compactly carved ivory netsuke**, of the god of longevity Fukurokuju seated with a tortoise, an animal associated with long life. Signed. Provenance: The Flower Family Collection. Height 33. See page 16. \$120
- 411**  
**A 19thC ivory netsuke**, of the god of prosperity Ebisu seated ignoring a rat helping itself to a basket of fish beside him. Signed. Provenance: The Flower Family Collection. Height 35. See page 16. \$180
- 412**  
**A small and compactly carved ivory netsuke**, of an old woman seated with a basket of produce. Signed. Provenance: The Flower Family Collection. Height 29. See page 16. \$120
- 413**  
**An old compactly carved ivory okimono**, of a cluster of ten various fish, deep tea stained. Small loss to one tail. Length 85. Provenance: The Flower family Collection. Length 85. See page 16. \$120
- 414**  
**A Japanese Meiji period shibiyama ivory miniature oval frame**, minutely inlaid with birds, butterfly and ladybird amongst gold lacquered bamboo, framing a European ivory relief plaque. Provenance: The Flower Family Collection. 92 x 73. See page 16. \$250
- 415**  
**A fine Japanese ivory okimono of a basket maker**, seated with numerous examples of his produce at his feet, he ties the rim of a basket, his hair in Edo period chonmage topknot, his robe finely diaper patterned, a sagemono suspended from his obi. Signed intaglio on red lacquer tablet. Provenance: The Flower Family Collection. Height 95. See page 16. \$750
- 416**  
**A fine Japanese Meiji period small okimono group**, depicting the goddess Benten in a chariot with a dragon, drawn by a stag and accompanied by children. The asymmetrical base incised with a view of a coastal temple. Signed on inlaid red lacquer tablet. Provenance: The Flower Family Collection. Width 60. \$300
- 417**  
**A late 18thC ivory netsuke**, of two sennin, one standing wearing a ragwort cape (tiny loss to fingers), one seated. Provenance: The Flower Family Collection. Height 50. See page 16. \$140
- 418**  
**A Meiji period Japanese ivory carving of a woman**, wearing a kimono that has the obi knotted taiko musubi, and holding a basket of shellfish in her left hand and a hermit crab in her right. Lightly stained. Provenance: The Flower Family Collection. Height 195. See page 16. \$750
- 419**  
**A Meiji period Japanese ivory carving of a woman**, wearing a kimono that has the obi knotted nijūdaiko musubi, standing holding a flute. Signed on inlaid red lacquer tablet. Provenance: The Flower Family Collection. Height 190. See page 16. \$750
- 420**  
**A pair of 19thC Japanese carved ivory door panels**, both sides detailed in relief with processional (and other) figures, fittings absent. Provenance: The Flower Family Collection. Each panel 95 x 83. \$250
- 421**  
**Three 19thC Japanese finely carved ivory panels**, the pair with women involved with the production of silk, including the harvesting of mulberry leaves and one figure at a loom, the other single panel incorporating 10

figures upon a vessel and pier. Each panel with two holes for various fittings (not present). Provenance: The Flower Family Collection. The pair 115 x 83, the single 115 x 98. See page 16. \$250

422

**A Japanese Meiji period (1868-1912) shibiyama tusk vase**, signed Masahisa on an inlaid mother-of-pearl tablet, decorated in aogai, tortoiseshell, stained ivory, coral, horn and wood, one side with a pigeon beside a display table and vase with a profusion of flowers, the other with birds in flight above lotus and other plants. Silver mount to carved wood base. Provenance: The Flower Family Collection. Height 255. See page 25. \$2,500

423

**A fine quality Japanese Meiji period carved ivory figure group**, the Japanese woman in traditional dress with a child to her back, a removable fan to her right hand. Inset red table to the base signed with three characters. Provenance: The Flower Family Collection. Height 185. See page 16. \$650

424

**A Japanese Meiji period marine ivory carving of a tiger with her two cubs**, finely engraved and stained detail. Length 152. Provenance: The Flower Family Collection. See page 16. \$300

425

**A Japanese Meiji period kiseru pipe holder**, carved in bone as a pair of curved long handled pliers highlighted with a clambering oni demon figure in relief, signed with character marks to a side tablet. Provenance: The Flower Family Collection. Length 200, a pipe included. \$150

426

**An early 20thC Japanese carved ivory figure group of the seven lucky gods aboard their takarabune**, the gods in various poses, the boat with phoenix bird head prow. Provenance: The Flower Family Collection. Length 140, Raised on carved hardwood stand. See page 25. \$450

427

**Three finely carved ivory small figures**, includes two geese with mother-of-pearl eyes and a seated hare. Provenance: The Flower Family Collection. Tallest 60mm. \$100

428

**Two early 20thC carved ivory elephants**, finely detailed. Provenance: The Flower Family Collection. Lengths 80 and 70. \$120

429

**A Japanese Meiji period carved ivory lidded container**, the oval tusk section finely carved with monkeys, stained detail, the lid with applied finial as a seated monkey eating a fruit. Height 110. See page 25. \$300

430

**A pair of carved ivory standing elephants**, each carved from a solid tusk section. Provenance: The Flower Family Collection. Height 120. 986gms. \$300

431

**A pair of exceptional Japanese shibiyama and silver cloisonné vases**, Meiji period, baluster shape with fluted and scalloped neck raised on a high domed triform base. The necks and shoulders of silver with clusters and racemes of cloisonné flowers, the swollen gold lacquered bodies decorated with shibiyama (aogai, mother of pearl, coral, stained ivory and horn) of birds and flowering plants, the silver bases with conforming cloisonné decoration. Two character signature tablets under the bases. Provenance: The Flower Family Collection. Height 190. See page 16 and front cover \$2,500

432

**A c.1900 Japanese Imari baluster vase**, wide everted fluted rim, traditional painted and panelled design. Height 365. \$160

433

**A vintage Japanese silver Wako Co. Ltd Ginza small jug and cup set**, lathe decorated jug and three bowls, stamps to bases and in fitted box. 130g. Height of jug 100. \$130

434

**A Japanese wireless cloisonné vase**, baluster shape, decorated with a single orchid bloom on a purple ground, silver rim and foot, impressed mark. Height 280. \$225

435

**A basse-taille enamel and silver wire cloisonné vase**, shouldered shape, decorated with rose blooms on a ruby ground. Height 250. \$200

436

**A Satsuma earthenware cloisonné vase**, decorated with inset wire cloisons to the polychrome glazed body. Height 340. \$120

437

**A fine old miniature cloisonné on silver vase**, hexagonal ovoid shape with slender neck, decorated with pale jade coloured panels of seasonal flowering plants and a sika deer, on a black ground with polychrome designs to the neck, shoulder and foot. Provenance: The Flower Family Collection. Height 155. See page 25. \$150

438

**A fine miniature cloisonné vase**, ovoid shape with short neck, decorated with blossom on a deep blue ground. Provenance: The Flower Family Collection. Height 90. See page 25. \$120

439

**An early cloisonné spherical jar and cover**, decorated with embattled dragons encircling the body on a gold speckled black ground, the small

circular lid surmounted by a ball finial, raised on three gilt metal bun feet. Provenance: The Flower Family Collection. Diameter 90. \$200

440

**A fine cloisonné jar and cover**, spherical shape, decorated with circular patterns of various flowers on a brocade ground, a linen-fold fabric design decorates the shoulder, decorated with a further floral brocade pattern, a small domed cover surmounted by a chrysanthemum bud finial. Provenance: The Flower Family Collection. Diameter 85. \$200

441

**A Japanese Meiji-period highly decorative bronze vase and stand**, the plain flared top with geometric scroll design to the rim, the interior with cylinder centre, all fitted to an open worked base of flaming waves, in original fitted wood box. Height 220. \$200

442

**A Meiji period Japanese bronze vase on stand**, the vase decorated in relief with a dragon climbing around the neck and holding a sword in his tail, the centre decorated with peacocks and other birds amongst flowers, the base with geometric and Greek key pattern, with conforming bronze stand. Provenance: The Flower Family Collection. Total height 1240. \$1,100

443

**A 19thC Japanese bronze travelling pen and ink receptacle with attached 19thC carved boxwood shishi netsuke**, the bronze with fine and decorative silver wire inlay, the attached bronze ojime with gold and silver highlights, the netsuke elegantly compactly carved and showing good fine detail and old smooth patina. Provenance: The Flower Family Collection. See page 25. \$280

444

**A Japanese bronze candelabra**, in the form of a crane standing on a turtle's back, three candle branches in the form of water lilies. Provenance: The Flower Family Collection. Height 420. \$250

445

**A Japanese bronze censer**, the lid and bowl with mythical beast handles, raised on a tripod base with a round spreading foot. Provenance: The Flower Family Collection. 110 x 280. \$150

446

**A Japanese Meiji period bronze standing elephant**, striding forward, ivory tusks. Provenance: The Flower Family Collection. Length 220. \$180

447

**A Japanese Meiji period bronze standing elephant**, trunk raised, ivory tusks, the pad of one foot signed with double character marks. Provenance: The Flower Family Collection. Length 160. \$180

448

**A Japanese Meiji period bronze ele-**



**phant**, standing upon his hind legs and wearing a fur trimmed jacket, ivory tusks with remains of red staining, fine detail. Provenance: The Flower Family Collection. Height 100. See page 25. \$180

449

**A Japanese Meiji bronzed spelter recumbent elephant**, trunk raised, character marks to base. Raised on a gnarled wood stand. Provenance: The Flower Family Collection. Length 185. \$150

450

**A Satsuma earthenware vase and cover**, ovoid shape, raised on three elephant head feet, the cover surmounted by a shishi finial, the body decorated with three fan shaped panels painted with flowers, figures and landscapes, on a brocade patterned ground with gilt enrichment. Impressed marks (possibly Taizan). Height 380. \$500

451

**An exceptional Satsuma earthenware vase painted by Okamoto Ryozan for the Yasuda Company**, decorated with a single masted vessel with 35 crew and passengers depicted on her deck, including samurai, a komusō mendicant monk, numerous men with Edo period chonmage hairstyle and women. The vessel's details and each figure's features and garments finely portrayed. A decorative gilt and enamel band encircles the neck incorporating four renditions of the Tokogawa mon. Marked under the base with the Yasuda insignia, Shimazu mon and nine character seal - Da Nippon, Kyoto, Ryozan. Provenance: The Flower Family Collection. Height 365. See page 25 and front cover. \$4,000 - \$6,000

452

**A pair of Japanese shunga scrolls**, both triptychs portraying irreverent and humorous caricatures of Shinto priests and priestesses, acolytes and samurai in sexualized imagery, printed in outline and hand-coloured on fine woven fabric laid on paper and outlined with brocade fabric borders, held in a fitted cypress wood box. \$1,200

TUESDAY 19<sup>TH</sup> JUNE 2018

2<sup>ND</sup> SESSION at 5.00pm

JEWELLERY

459

**An Ethiopian butterscotch amber necklace** with natural turquoise beads and silver spacers. Length 700. \$120

460

**A 19thC carved pale pink coral and gold clasped hand pendant**, suspension ring attached. \$280

461

**A vintage European silver amethyst tourmaline and seed pearl necklace**, the central pendant-type drop with two large oval faceted

amethysts flanking the open scrolling section. \$160

462

**A vintage European jewelled silver pendant on modern silver chain**, the scrolling floral design open worked pendant highlighted with a green peridot, vibrant pink stones and a single central cultured pearl. \$160

463

**A vintage European jewelled silver pendant necklace**, the filigree-worked pendant encrusted with semi-precious stones. \$160

464

**An 18ct. yellow gold mounted jade pendant**, the oval cabochon jade panel of medium green tone. Length 20. \$100

466

**A Victorian 9ct. gold, amethyst and pearl pendant**, the elaborate scrolling frame set with small seed pearls, a facet-cut amethyst set to the centre with a small teardrop shape amethyst suspended from base, together with a fine silver gilt chain. \$300

467

**A silver double sovereign case**, plain rectangular form, with silver chain and T-bar. Birmingham 1912. \$150

468

**A modern 18ct. yellow gold, diamond and emerald pendant necklace and earring set**, the pendant and each earring with a facet lozenge-cut emerald in rub-over mount above a wide flattened section, a single diamond set above. \$1,000

469

**A quality vintage strand of Sakata Pearl Co. Cultured pearls**, the 79 graduated pearls showing good lustre, the 14ct. yellow gold clasp with a further pearl. In original named box with single extra pearl and maker's certificate of guarantee. Presented to a previous owner by the Japanese Prime Minister, Kakuei Tanaka, his personal card included. Length 460. \$200 - \$300

470

**A decorative silver and agate gentleman's fob seal on silver chain**, the seal with scroll supports, the belcher link chain, 560mm. \$200

471

**A 9ct. gold charm bracelet**, together with eleven 9ct. gold charms including a fan, bird cage and chianti bottle. 36.3gm. \$650

472

**A mala bracelet of 12 uniform 19mm round tiger's eye beads**. \$400

473

**A modern smoky quartz and silver sectional bracelet**, the nine large rectangular facet-cut smoky quartz tablets each claw-set in a conforming frame, cushion clasp. \$300

474

**An impressive estate amethyst necklace**, 14 graduating size facet-cut amethysts set into silver mounts with a small seed pearl set between each amethyst, an 18.9ct pear-shaped amethyst suspended from the base in a 9ct. gold mount, push in clasp with safety chain, TAW 137ct. Valuation available. See page 25. \$1,200

475

**A Belle Époque-style pendant**, in the form of a flowing bow with a small bow suspended from the base, the two bows encrusted with old mine-cut diamonds, a teardrop facet-cut Ceylonese blue sapphire suspended from the smaller bow, silver backed in gold and with a fine gold chain. \$1,200

476

**A Belle Époque-style pendant**, in the form of a floral wall sconce, the silver pendant backed in gold set with old mine-cut diamonds and a small ruby, emerald and sapphire, with conforming diamond set bale. \$1,000

477

**An impressive Art Nouveau-style gem set dragonfly pendant**, the body set with six facet-cut aquamarines and one amethyst, the wings encrusted with diamonds and sapphires, silver backed with gold, with fine gold chain. See page 25. \$2,750

478

**An Art Deco-style gem set butterfly brooch**, the body and wings encrusted with diamonds, rubies, emeralds and sapphires, silver back with gold. See page 25. \$1,000

479

**A pair of diamond stud earrings**, old European-cut diamonds claw-set and on 14ct. yellow gold posts for pierced ears. One diamond 0.90ct, the other 0.83ct. Valuation available. See page 25. \$5,500

480

**A platinum jade and diamond ring**, the 21ct. round cabochon jade of sea green hue, surrounded by 24 small round brilliant cut diamonds. See page 25. \$3,000

481

**An 18ct. white gold sapphire and diamond dress ring**, the oval mount with five round brilliant-cut diamonds set in a row framed by 22 square and mixed-cut sapphires, further surrounded by round brilliant cut diamonds, the shoulders in the form of diamond set bows. TDW 1.89ct., TSW 2.60ct. Valuation available. See page 25. \$3,500

482

**An impressive modern Art Deco-style 18ct. white gold, ruby and diamond dress ring**, the central round brilliant-cut diamond of 0.75ct framed by a lozenge form setting with scroll detail incorporating 40 channel-set natural

rubies with total weight of 3.60ct and 32 bead set round brilliant cut diamonds of 0.50ct. Valuation available. See page 25 and front cover. \$3,500  
483

**An impressive modern 16-18ct. white gold, emerald and diamond cluster ring**, the central claw set oval standard mixed-cut natural emerald of 2.83ct flanked by tapered bars of micro-bead set round brilliant cut diamonds, further diamonds in scrolling designs either side, the TDW of 1.27ct, 32 channel set square modified mixed cut natural emeralds bordering the shoulders of 0.64ct. Valuation available. See page 25. \$3,600  
483A

**A 14ct. white gold and diamond solitaire ring**, the 1.01ct. round brilliant-cut diamond claw-set, upswept shoulders. Valuation available. See page 25. \$3,250  
484

**A modern Belle Époque-style 18ct. white gold, sapphire and diamond cluster ring**, the central rub-over oval shaped diamond of 0.50ct framed by alternating bands of diamonds and sapphires, scrolling and shield form forked shoulders. The 20 claw-set tapered modified mixed-cut natural blue sapphires of 0.80ct, the 56 micro-bead set round brilliant-cut diamonds framing the central stone totalling 0.70ct. Valuation available. See page 25 and front cover. \$2,800  
485

**An 18ct. white gold diamond cluster ring**, the pear shape mount set with eight Old European and modern brilliant cut diamonds, swagged undersides to the mount, upright shoulders and plain shank. TDW 1.24ct. Valuation available. See page 25. \$2,000  
486

**An estate 18ct. white gold, diamond cluster ring**, an Old European cut diamond bead-set to the centre and surrounded by another ten Old European cut diamonds. TDW 1.40ct. Valuation available. See page 25. \$1,500  
487

**An impressive large 18ct. rose gold, opal and diamond ring**, the large oval cabochon opal measuring 175 x 142mm, held by four claws and framed by an encircling band of claw-set modern brilliant cut diamonds, forked shoulders. See page 25. \$2,000  
488

**An estate 18ct. gold and three stone diamond ring**, the 0.62ct early modern brilliant cut diamond claw set with an Old European cut diamond to each side, TDW 1.03ct. Valuation available. See page 25. \$1,100  
489

**An 18ct gold, diamond and sapphire ring**, a 1.20ct oval mixed cut natural

blue sapphire claw set and surrounded by eight small sapphires and four diamonds, upright shoulders. Valuation available. See page 25. \$650  
490

**An 18ct. gold, diamond and topaz ring**, the 1.15ct oval mixed cut natural pink topaz claw set and surrounded by 18 round brilliant cut diamonds, split shoulders. Valuation available. See page 25. \$600  
491

**An estate platinum and five stone diamond ring**, the engraved shank and mount set with five round brilliant cut diamonds claw set. Approx. TDW 0.65ct. \$750  
492

**An 18ct. white gold, emerald and diamond ring**, six step-cut natural emeralds claw-set, set in a stepped row with two ribbon loops top and bottom set with 22 single cut diamonds. Split shoulders and tapering shank. Total emerald weight 0.95ct. Valuation available. See page 25. \$850  
493

**A modern 18ct. rose gold, opal and diamond dress ring**, the large oval cabochon opal with good dark tone, framed by an encircling band of small modern brilliant cut diamonds, the geometric shoulders and claws set with further conforming diamonds. The opal approximately 154 x 120. See page 25. \$600  
494

**A modern 18ct. rose gold, amethyst and diamond dress ring**, the oval facet-cut amethyst of good clear tone. Approx. 145 x 118, framed by an encircling band of small brilliant cut diamonds, the open elongated oval shoulders with further conforming diamonds. See page 25. \$500  
495

**An 18ct. rose gold opal, ruby and diamond ring**, the flowerhead design comprised by five oval cabochon diamonds, radiating from the central ruby, diamonds framing the outer curve of each opal, forked shoulders. See page 25. \$450  
496

**A palladium and emerald ring**, the emerald cut emerald claw-set horizontally in an open V-mount, the high upright shoulders each set with two small emeralds and a diamond, stamped 18ct. PALL. \$450  
497

**An 18ct. yellow gold opal and diamond cluster ring**, the four central diamonds framed by four larger oval cabochon milk opals, an encircling band of small diamonds below. \$400  
498

**A modern 18ct. white gold, jadeite and diamond dress ring**, the long jadeite panel of vibrant green and pale tone, six small brilliant-cut dia-

monds inset in a row to each shoulder. See page 25. \$800  
499

**An 18ct. gold, opal and diamond ring**, the 5.3ct (approx.) oval cabochon opal with professional repair, claw-set in an open basket mount and surrounded by small round brilliant-cut diamonds, the split shoulders with conforming diamonds, the opal of good colour and play-of-fire. \$700  
500

**An 18ct. yellow gold, large citrine and diamond dress ring**, the oval facet cut citrine of approx. 5.5ct claw-set above a pierced curving mount highlighted with a row of six small diamonds to each corner. \$500  
501

**A 22ct. yellow gold seal type ring**, the oval panel with motif in relief incorporating eight small brilliant-cut diamonds and seven rubies, enamel highlights. 7.9gms. See page 25. \$400  
502

**A large vintage 18ct. yellow gold and diamond cluster ring**, the 21 brilliant-cut diamonds bead-set in a diamond formed grid, wide flaring ribbed shoulders. See page 25. \$1,600  
503

**A modern 18ct. white gold topaz and diamond dress ring**, the oval cabochon topaz of good clear blue tone claw set above a swirling lobed mount encrusted with small brilliant cut diamonds, basket mount below. \$480  
504

**An 18ct. yellow gold, sapphire and diamond ring**, the blue/green toned central oval sapphire framed by two smaller and an encircling band of small brilliant-cut diamonds. \$300  
505

**An 18ct. rose gold, black opal and diamond dress ring**, the oval cabochon opal with exceptional fire, held by four claws above an encircling band of small modern brilliant cut diamonds, forked shoulders. See page 25. \$480  
506

**An estate 18ct. yellow gold and three stone diamond ring**, the round brilliant cuts in rub-over mounts set in a row with TDW of 0.48ct. 1997 valuation available stating \$625. \$650  
507

**An 18ct. gold and diamond ring set**, a 0.43ct. modern round brilliant-cut diamond claw set, split shoulders with applied scroll and leaf decoration each grain set with a small single cut diamond, together with an 18ct. gold band set with five small single cut diamonds. Old valuations available. \$800  
508

**A 14ct. gold diamond and pearl ring**, the round white pearl set to the centre of two gold leaves, with a small single

cut diamond to each leaf, split shoulders. \$150

509

**An Edwardian 18ct. gold ruby and diamond ring**, the band in the form of a belt set with a small diamond to the centre of two rubies. Chester 1905. \$350

510

**An 18ct. gold and five stone diamond ring**, a 0.53ct emerald cut diamond in a rub-over mount with two baguette cut diamonds to each side, upright shoulders and plain shank. Old valuation available. See page 25. \$950

511

**A retro 9ct. gold and smoky quartz ring**, the round facet cut smoky quartz claw set in a high pierced mount, upright shoulders and plain tapering shank. \$250

512

**An 18ct. white gold ruby and diamond ring**, the oval facet cut pigeon blood ruby claw set and surrounded by two rows of round brilliant cut diamonds. See page 25. \$1,000

513

**A 14ct. gold and diamond cluster ring**, the seven round brilliant cut diamonds claw set in a high white gold open tulip mount. \$950

514

**A modern 18ct. white gold amethyst and diamond ring and bracelet**, the ring with single oval facet cut amethyst above an encircling row of small modern brilliant cut diamonds, the undulating serpentine outer frame set with an encircling band of baguette diamonds, the conforming bracelet with three linked repeating sections. See page 28. \$2,200

515

**A 19thC 18ct. yellow gold framed quality cameo brooch**, the finely carved shell cameo of a woman in profile with curled coiffure, the scrolling vine leaf frame with grape bunch highlights. 55 x 55. Note: One of the best we have seen in a long time. See page 28. \$2,000

516

**A Victorian gilded 18ct. yellow gold and turquoise fern leaf brooch**, circular form, the concave centre mounted in relief with three fern leaves each detailed with small turquoise cabochon beads. 10.4gm. Diameter 35, a glazed portrait panel to the reverse. \$300

517

**An estate 18ct. gold and platinum amethyst and diamond bar brooch**, a 1.00ct facet cut amethyst in a rub-over mount to the centre with a platinum leaf to each side set with three Old European single cut diamonds. Valuation available. \$250

518

**An Edwardian 9ct. greenstone and seed pearl brooch**, the gold bar with heart shaped greenstone cabochon framed by seed pearls. \$200

519

**A mid-20thC 9ct. yellow gold framed quality cameo brooch**, the helmet shell carved in relief with a classical seated woman draped in a robe feeding an exotic bird. \$140

520

**A 1981 gold proof full sovereign**, in original case. \$400

521

**An early 20thC 9ct. yellow gold and turquoise bead ring**, the cluster of seven cabochon turquoise beads set to the hexagonal lobed frame, parallel curving shoulders. \$200

522

**A vintage quality German cultured pearl silver and marcasite bracelet**, the oval silver clasp stamped to the reverse. \$160

523

**A vintage Chinese silver and lapis lazuli necklace**, bracelet and ring set, the triangular cabochon type lapis panels with relief carving of a stylised hand and florals, the gilded silver mounts with filigree and fine seed-pearl set highlights, some pearls absent. \$220

524

**A Chinese carved orange agate bead bracelet**, the 14 spherical beads with various repeating scroll decoration. Diameter approx. 15. \$150

525

**A purple Russian charoite bead bracelet**, the 12 large spherical beads of marbled purple tone. Diameter approx. 18. \$160

526

**A retro English made 9ct. yellow gold wide bracelet**, square and bar form links. Birmingham hallmarks. 44gms. See page 28. \$850 - \$1,000

527

**An uncommon gilded 9ct. yellow gold Grey Lynn Returned Services stick pin**, the military helmet form relief detailed with 'RS GREY LYNN', safety pin attached. \$180

528

**Three vintage N.Z. medallions**, includes: a silver Coronation medallion 1902 by A. Kohn, a 1906/07 Christchurch Exhibition small gilt 'Kiwi' medallion and a silver Auckland Grammar crest badge stamped with maker's mark 'Young & Co'. \$200

529

**A 9ct. gilded rose gold Maltese Cross fob by A. Kohn (New Zealand)**, presentation engraved 'St. Benedict's Club... 1st Prize A.Rose 1913'. Stamped maker's mark. 15.2gms. \$300

## — CLOCKS & WATCHES —

530

**An 18ct. yellow gold lady's half hunter fob watch**, stem wind, blue enamel Roman numerals to the outer case, the white

enamel dial in good condition, movement not working. 17.3gms. \$320

531

**An 18ct. gold cased pocket watch**, open face with a white enamel dial, Roman numerals, railtrack minutes and subsidiary seconds, the lever wind movement signed Wm. Hall, 60 Albion St., Birmingham, gold dust cover, hallmarked back cover with engraved initials; with gold plated chain. Case weight (incl. movement) 65gms. \$1,000

532

**An 18ct. gold cased pocket watch**, open face with a white enamel dial, Roman numerals, railtrack minutes and subsidiary seconds, the lever wind movement signed J.B. Yabsley, 72 Ludgate Hill, London, gold dust cover, hallmarked back cover. Case weight (incl. movement) 85.9gm. See page 28. \$1,100

533

**An early 20thC 18ct. yellow gold Omega lady's fob watch**, stem wind, black enamel Roman numerals to the white enamel dial, subsidiary seconds, marked with N.Z. retailer 'S. McLemon, Napier, N.Z.'. Working order. Valuation available. 33.4gms. See page 28. \$700

534

**An Omega gent's 'Constellation' chronometer wristwatch**, stainless steel 35mm diameter case with 18K gold bezel marked with Roman numerals, champagne dial with gold batons indicating hours, date aperture at 3 o'clock, Dauphine hands, sweep seconds; gold and stainless steel bracelet. In original case and box with instruction book. See page 28. \$1,100

535

**A German Art Deco enamelled and gilded desk clock**, the circular dial with Arabic numerals within a demi-lune frame enamelled with an exotic long tailed bird and blossom, strut back, working order. 120 x 75. See page 28. \$350

536

**A late 18thC oak cased bracket clock**, the architectural case with break-arch pediment, circular brass face flanked by tapering columns, the dial with Roman numerals and railtrack minutes, engraved with clockmaker's name 'Wainwright', bell striking movement, requires attention, hands missing. Height (incl. bracket) 760. \$250

537

**A brass cased ship's clock**, mounted on a teak back board. Diameter 190. 300 x 300. \$120

538

**A French alabaster cased mantel clock**, bell striking movement, enamel dial with Arabic numerals, the case with gilt metal embellishment. Some faults. Height 380. \$200



539

**A 19thC French gilt mantel clock**, the ornate gilt brass stand decorated with a young picnicking couple in front of a tree, the white enamel dial with Roman numerals, with key and pendulum, back plate absent. 300 x 100 x 400. \$750

540

**A French gilt bronze cased mantel clock**, with bell striking movement by Villard, the white enamel dial with blue Roman numerals, set in a case surmounted by birds and a fallen torch, the body set with Limoges-type panels with a pair of conforming candlesticks. Height 350. \$500

541

**A French mantel clock**, the ormolu case surmounted by two birds on laurel branches, the drum case holding the bell striking movement with a white enamel dial with Arabic numerals raised on a white marble fluted column from an oblong marble stepped base embellished with further ormolu mounts. Height 280. See page 28. \$1,500

542

**An 18thC-style French large bracket clock**, the pagoda top with ormolu urn finial, the teal painted case decorated with leaves and berries, the white enamel dial with Roman numeral surrounded by further ormolu embellishments, raised on a conforming wall bracket. Bell striking movement. Height overall 1030. See page 28. \$1,800

542A

**A 19thC French gilt metal and spelter mantel clock**, the gothic base with porcelain panels to the arcaded fascia flanking a white enamel dial with Roman numerals and Breguet type hands, surmounted by a bronzed spelter ecclesiastical figure group. Japy Freres bell striking movement. Height 460. See page 28. \$800

## — OBJET DE VERTU —

543

**An early period Scottish horn and silver snuff mull**, the elegant scrolling horn with silver top mount engraved 'Robert Keir', the horn lid with silver hinge, encircling mount and engraved cartouche. Provenance: The Flower Family Collection. Length 78. See page 28. \$380

544

**A rare George III whale's tooth and silver mounted snuff mull**, the small natural curving tooth with semi-polish, the plain hinged lid with scalloped thumb piece. Edinburgh 1810. Provenance: The Flower Family Collection. Length 100. See page 28. \$350

545

**A George III agate and silver snuff box**, bow front, striated and mottled red dominant tone, the lid with ribbed silver mounts and central domed panel.

Provenance: The Flower Family Collection. 71 x 52. See page 28. \$350

546

**A George III silver rare satchel form snuff box**, fine engraved detail including diaper and scroll designs. London 1817 by 'WE', various makers listed including William Eaton, William Edwards etc. Provenance: The Flower Family Collection. 54 x 33. See page 28. \$220

547

**A collection of snuff boxes**, all in various states of repair, one made of a timber burl, the other wood from the Royal George sunk in 1782, etc. Provenance: The Flower Family Collection. \$150

548

**A collection of snuff boxes**, some wood, tortoiseshell and horn, all in varying states of repair. Provenance: The Flower Family Collection. \$130

549

**A 19thC silver and ivory mounted snuff box**, the lid set with a carved ivory panel in high relief as the bust of a young woman, the body engraved with scrolls and florals, stamped 'SILVER'. Provenance: The Flower Family Collection. Length 61, depth 50. See page 28. \$220

550

**A Victorian silver presentation quality table snuff box**, serpentine bordered rectangular form, machine engraved, gilded interior, the lid presentation engraved 'Mr & Mrs Hudson to I.R. Hancorn. N.R.C.S. as a small token of Gratitude for his Kind Attention to them During the absence of their own Medical Attendant. DECR, 13th 1850'. Birmingham 1848 by Edward Smith, a noted box maker. Provenance: The Flower Family Collection. 71 x 43. See page 28. \$150

551

**A 19thC silver and agate snuff box**, the base and mildly domed lid panels as pale grey semi-translucent agate, silver engraved body, the lid with gilt scroll cartouche and rose enamelled black hardstone panel. Provenance: The Flower Family Collection. Length 31. See page 28. \$120

552

**An early 19thC silver and cowrie shell snuff box**, the lid with characterful shell section jewelled with a red cabochon stone (ruby) silver fitting, the silver base scroll engraved. Unmarked. Provenance: The Flower Family Collection. See page 28. \$220

553

**An Edwardian silver rectangular snuff box**, in the Georgian style, the base and hinged lid with ivy engraved leaf decoration, circular large vacant cartouche. Birmingham 1909 Gloster Ltd. Provenance: The Flower Family Collection. Length 45. See page 28. \$120

554

**A 19thC or earlier Japanese steel and**

**decorative gold applied sword fitting snuff box**, the fuchi and kashira Japanese katana sword fittings converted to a silver lined snuff box, engraved plant (orchid) and blossom highlights applied with gold. Provenance: The Flower Family Collection. Length 40. See page 28. \$250

555

**An early 19thC exotic timber (birds-eye maple) circular snuff box**, the lid press moulded with figures, waterfall, distant bridge and town, entitled 'Vue d'une Cascade pres Tivoli'. With uncommon tortoiseshell lining. Provenance: The Flower Family Collection. Diameter 86. See page 28. \$200

556

**An early 19thC pressed horn circular lidded snuff box**, the lid decorated in relief with a classical scene of a woman in a garden with an admirer behind a pedestal urn, entitled 'The Sensitive Plant'. The base with fine complicated floral motif and beaded frame. Provenance: The Flower Family Collection. Diameter 72. See page 28. \$200

557

**Two George III horn and tortoiseshell snuff boxes**, one of lozenge form with pale and dark toned panelled lid, the other rectangular, the lid with fine wire work and metal floral inlays and tortoiseshell border. Provenance: The Flower Family Collection. \$220

558

**An early 19thC black lacquer papier-mâché snuff box**, circular, the lid with fine detailed image of a classical couple within a landscape, the seated woman lifting her dress, entitled 'Regardez, mais n'y touchez pas' (Look, but do not touch). Provenance: The Flower Family Collection. Diameter 88. See page 28. \$180

559

**An early 19thC pressed horn and painted scene snuff box**, circular, the glazed lid with painted panel of a coastal castle, sail boat and figures. Provenance: The Flower Family Collection. Diameter 82. See page 28. \$200

560

**A 19thC exotic wood (birds-eye maple) snuff box**, the lid press moulded detailed with an image of 'Pantheon Français', unusually lined with tortoiseshell. Provenance: The Flower Family Collection. Diameter 86. See page 28. \$200

561

**A George III tortoiseshell and white metal snuff box**, curved rectangular form, white metal hinged thumb piece and cartouche with engraved initials. Provenance: The Flower Family Collection. 62 x 40. See page 28. \$200

562

**A George III moss agate and gilt snuff**

**box**, oval form, fine machine engraved encircling bands. 57 x 49. A small piece of wood enclosed together with label detailed 'Piece of wood from Pharos Tomb'. Provenance: The Flower Family Collection. See page 28. \$200  
563

**An early Victorian silver and agate snuff box**, the striated agate appearing as a weeping tree, floral and leaf engraved detail encircling the sides. Hallmarked under the hinge, London 1840. A small piece of stone included together with label 'Canterbury Cathedral'. Provenance: The Flower Family Collection. See page 28. \$250  
564

**An early 19thC silver and piqué oval snuff box**, the hinged lid with mother-of-pearl and brass inlay in a radiating fan type decorative design. Provenance: The Flower Family Collection. 89 x 64. See page 28. \$200  
565

**A 19thC tortoiseshell, silver and inlaid snuff box**, rounded rectangular form, tortoiseshell base and hinged lid with decorative piqué floral inlay, shield cartouche. Provenance: The Flower Family Collection. 83 x 52. See page 33. \$200  
566

**A pair of 19thC tapered small animal horn and silver mounted snuff receptacles**, the silver cap mounts with engraved detail and attached spoons. Provenance: The Flower Family Collection. Length 90. See page 33. \$300  
567

**Two 19thC horn snuff boxes**, oval form, one with citrine toned cairngorm in silver mount fitted to the lid. Provenance: The Flower Family Collection. Width 98 and 83. See page 5. \$220  
568

**Two 19thC horn and tortoiseshell snuff boxes**, each with tortoiseshell panelled hinged lid. Provenance: The Flower Family Collection. Widths 70 and 48. \$150  
569

**An early Victorian silver and striking blue banded agate table snuff box**, rectangular form, agate panels to the lid and base, the silver sides with leaf and floral engraved scroll decoration. Edinburgh 1838 by Andrew Wilkie. Provenance: The Flower Family Collection. 91 x 62. See page 33. \$400  
570

**An early 19thC silver and ram's horn Scottish snuff mull**, the dome lid set with a pale toned cairngorm, leaf scroll cast and engraved decoration, traditional scrolling horn body. Provenance: The Flower Family Collection. Length 70. See page 33. \$340  
571

**An 18thC Scottish ram's horn and silver mounted snuff mull**, the horn hinged lid with thistle and leaf engraved mounts,

the cartouche with engraved monogram, the top rim with plain silver band engraved with date 1772 flanking the hinge, traditional curving body. Provenance: The Flower Family Collection. Length 70. See page 33. \$380  
572

**An early 19thC Scottish small ram's horn and silver finger suspended vinaigrette**, the tall domed lid in relief with Scottish thistles and mounted to the top with a citrine toned faceted cairngorm, the gilded interior with a pierced removable lid enclosing the original sponge, a chain attaches the finger ring. Provenance: The Flower Family Collection. Length 43. See page 33. \$350  
573

**An early Victorian miniature vinaigrette**, the exterior with machine decoration, the interior with original grille, gilt wash and suspension ring. Birmingham 1845 by Francis Clarke. Provenance: The Flower Family Collection. \$150  
574

**An early Victorian fine quality silver vinaigrette**, rectangular form with canted corners, leaf and scroll engraved, elegant cast floral and shaped thumbpiece, the gilded interior with conforming floral and leaf scroll engraved and pierced grille. London 1837 by Gervase Wheeler, a noted vinaigrette maker. Provenance: The Flower Family Collection. Length 38. See page 33. \$220  
575

**A quality George III gilded silver Samuel Pemberton vinaigrette**, rectangular form, the lid with applied floral cast silver band enclosing the machine engraved cartouche, the gilded interior with floral engraved and pierced grille. Birmingham 1790 by Samuel Pemberton. Provenance: The Flower Family Collection. Length 30. See page 33. \$200  
576

**An early 19thC silver and shell vinaigrette**, the ribbed conch shell with silver mount base, the hinged lid enclosing a simple pierced grille, suspension finger ring and chain attached. Provenance: The Flower Family Collection. Length 44. See page 33. \$140  
577

**A George III silver small oval Samuel Pemberton vinaigrette**, the removable lid enclosing a plain pierced grille with engraved decoration, gilded interior, a suspension ring capturing the two parts. Stamped with maker's mark only, Samuel Pemberton. Provenance: The Flower Family Collection. Length 24. See page 33. \$150  
578

**A quality 19thC silver and agate mermaid snuff box**, the circular box with agate base, sides and hinged lid, silver

mounts and lapis lazuli thumb piece, flanked and supported by two mermaids, finely detailed, one with minor loss to one tail section. Provenance: The Flower Family Collection. Width 88. See front cover and page 33. \$400  
579

**A 19thC banded agate and gilt metal (silver) oval box**, the base, sides and lid in dark and white striated agate panels, raised on four conforming agate ball feet, ribbed gilt mounts. Provenance: The Flower Family Collection. 72 x 60 x 53. See page 33. \$300  
580

**A Victorian ivory covered card case**, the front with oval cartouche incorporating a vacant shield framed by scroll and wrythen forms, the bone handled pencil removable revealing the watered silk-lined sectional interior. Provenance: The Flower Family Collection. 108 x 80. See page 33. \$200  
581

**A silver leaf scroll engraved card case**, serpentine edge, oval cartouche panels. Birmingham 1865 by Hilliard & Thomason. Provenance: The Flower Family Collection. 95 x 70. \$120  
582

**A 19thC marine ivory, bone and tortoiseshell pastry wheel**, the lozenge tapered handle with inlaid detail, traditional pleated wheel, old repair to two tines. Provenance: The Flower Family Collection. Length 195. See page 33. \$260  
583

**Two Victorian coquilla nut nutmeg graters**, one in the form of an acorn, the other of barrel form. Provenance: The Flower Family Collection. \$150  
584

**A George III silver shell top nutmeg grater**, oval form, original steel grating grille, finely ribbed sides. Birmingham 1808 by Matthew Linwood. Provenance: The Flower Family Collection. Length 33. See page 33. \$200  
585

**Two Victorian coquilla nut pomanders**, ovoid form with decorative carving. Provenance: The Flower Family Collection. \$100  
586

**A c.1900 silver topped and glass cornucopia scent phial**, the embossed circular screw lid stamped 'Sterling', fine saw-tooth ribbed curved body. Fine suspension finger ring and chain attached. Provenance: The Flower Family Collection. Length 102. See page 33. \$140  
587

**A late 19thC silver topped and cut glass, acorn bodied scent bottle**, this uncommon form with embossed floral hinged lid revealing an original cut glass stopper, the acorn form body with diamond-cut swollen top. Unmarked. Suspension finger ring and

chain attached. Provenance: The Flower Family Collection. Length 62. See page 33. \$160

588

**Three small sewing accessory boxes**, a small tortoiseshell box containing an ivory thimble, a mother-of-pearl and silver plate pin box and a Morocco leather box holding a mid-Victorian gilt metal concertina needle holder known as 'The Beatrix'. Provenance: The Flower Family Collection. \$180

589

**An Edwardian silver uncommon mussel shell form vesta**, all-over ivy leaf engraved decoration, hinged lid, recessed striking section towards the base edge. Birmingham 1902 by Charles Lyster & Son. Provenance: The Flower Family Collection. Length 61. See page 33. \$140

590

**A late Victorian silver book form vesta**, leaf engraved side panels, both overhanging plain ends as hinged lids, swivelling suspension and ring attached. Birmingham 1899 by Rolason Bros., noted vesta makers. Provenance: The Flower Family Collection. Length 33. \$110

591

**An antique silver chick head handle wax seal**, the red agate seal with script engraved initials. Provenance: The Flower Family Collection. Height 29. See page 33. \$120

592

**An Edwardian silver miniature pin cushion**, in the form of a bird, together with a silver thimble by Charles Horner. Birmingham 1907 by Levi & Salaman. Provenance: The Flower Family Collection. \$180

593

**A Victorian silver castle top vinaigrette**, serpentine bordered rectangular form, the lid finely engraved with a lakeside castle scene, highlighted with three row boats and rising sun, the sides with fine diamond engraved shaped panels, the base with leaf scrolls framing the engraved cartouche 'Marianne', the gilded interior with elegant scroll engraved and pierced grille, original sponge enclosed. London 1848 by Edward Smith, a noted box and vinaigrette maker. Provenance: The Flower Family Collection. See page 33. \$250

594

**An early Victorian silver and micro-mosaic snuff box**, oval form, the black hardstone lid inlaid with a micro-mosaic panel of a spaniel dog, tortoiseshell panelled base, scroll engraved silver sides. Edinburgh 1838 by Andrew Wilkey. Provenance: The Flower Family Collection. Width 49. See page 33. \$280

594A

**A 19th century mother of pearl and hand painted silk fan**, the sticks pierced and inlaid with cut brass, pinned by a deco-

orative gilt metal bale, the silk decorated with flowers, some distress. \$150

594B

**A 19th century bone and pleated paper fan**, the sticks pierced and inlaid with cut brass, the paper with hand coloured lithograph some distress. See page 33. \$150

594C

**A 19th century ivory**, lace and silk fan, the end sticks overlaid with cut brass highlighted with enamels and set with turquoise and foil backed garnets, pinned by a decorative bale, some distress. \$150

## SILVER

595

**A late 19thC Russian silver and banded agate small vase**, the spreading silver frame with four scrolling legs, stamped Cyrillic maker's mark possibly for Michael Perchin and French import mark, other markings removed. Diameter 55, height 60. See page 33. \$300

596

**A late Victorian silver mounted glass paperweight inkwell**, domed form, broad embossed and pierced decorative mount over the domed heavy glass body. London 1896 by William Comyns & Sons. Diameter 80, star-cut base. See page 33. \$220

597

**A Russian filigree silver kovsh**, of stylised bird form, unmarked. Length 150. See page 33. \$180

598

**An Eastern silver model sailboat on stand**, modelled with a single sail and wire twist rigging, stamped marks 'Silver 925'. Height on stand 240. With original red velvet packing box. \$180

599

**A rare early 20thC silver pin cushion modelled as a standing goat**, well detailed with curving horns, beard, hair, etc., original cushion. Chester 1918 by Adie & Lovekin Ltd. Length 35. See page 33. \$650

600

**A Victorian crested silver inkstand of rococo style**, decorated with leaves and scrolls and a supporting pair of original cut glass inkwells. Sheffield 1860 by John Harrison & Co. Length 250. \$350

601

**A heavy Georgian Revival silver inkstand**, of oblong shape with gadrooned borders, the pair of fixed inkwells with original glass liners. London 1919 by Goldsmiths & Silversmiths Co. 660gms (minus glass liners). Length 230. \$400

602

**A silver cigarette box** with engine turned lid and wood lined interior. Birmingham 1947. 400gms. Length 115. \$140

603

**An Edwardian large engraved uncommon silver vesta**, with fall front revealing photo locket. Birmingham 1901 by George Randle, a noted case maker. 53 x 45. See page 33. \$200

604

**A 19thC horn cup**, unmarked silver rimmed and a fixed shield shaped cartouche with engraved initials. Height 110. \$120

605

**An Edwardian silver and crystal perfume bottle**, spherical form with cut decoration and decorative embossing to lid. Provenance: The Flower Family Collection. Diameter 110. Birmingham 1909. \$150

606

**A French 19thC silver plate chatelaine**, the decorated belt hook with three chains, suspended from each chain a small perfume bottle, a bucket form thimble holder and a pair of scissors. \$150

607

**A 19thC French chatelaine etui**, the silver plate and leather etui containing various sewing and personal accessories, attached to a steel chain with chatelaine belt hook. \$150

608

**A 19thC silver plate chatelaine pocket watch**, the ornate watch cover contains a French silver pocket watch, the enamel dial with Roman numerals, the holder attached to an ornate silver plate chatelaine belt hook. \$200

609

**A Victorian sterling silver chatelaine**, the ornate decorated clip with five silver chains suspended with a small mirror, mesh coin purse, glove button hook and a pair of scissors. \$250

610

**A cut steel chatelaine**, the decoratively pierced hook with three chains holding a thimble holder in the form of a bucket, a pair of scissors and a note cube. \$80

611

**A late Victorian silver chatelaine**, the plain shaped clip with five chains suspended from base, each holding a personal accessory including pin cushion, smelling salts bottle, etc. Birmingham 1900. \$250

612

**An early 20thC silver cased desk clock**, rectangular form, the white porcelain dial with Arabic numerals and subsidiary dial, overhead swing handle, the front engraved with bishop's mitre crest. Not working. Height 140. \$200

613

**A 1920s unengraved trophy cup**, classic plain form with trumpet base. Sheffield 1922. 265gms. Height 182. \$200

614

**A 1930s classical silver two-handled**





422



422 reverse



426



443



429



451



438



437



446



447



477



448



474



478



451-marks



479



480



481



482



483



483A



484



485



485



486



487



489



490



492



493



494



495



498



501



502



505



510



512

**trophy cup**, presentation engraved 'The Lady Marling Cup 1935'. Birmingham 1934. 310gms. Height 155. \$240  
615

**A four piece Georg Jensen brushed steel cutlery set**, dinner and luncheon knives, forks and spoons in the Mitre Canute pattern designed in 1941 for Georg Jensen. \$100  
616

**A double struck King's pattern six-place silver plate cutlery service**, together with carving set, serving spoons and sterling silver handled bread knife, by Viners of Sheffield. \$350  
617

**Georgian fiddle pattern Georgian silver cutlery**, comprising six table forks; six dessert forks and six dessert spoons, various dates and makers. Total weight 810gms. \$400  
618

**A part canteen of Walker & Hall silver plated cutlery**, including knives with ivory handles, the Hanoverian pattern flatware engraved with the crest and motto of Wardlaw. The fitted mahogany canteen with green velvet lining. \$250  
619

**A matching set of six Georgian fiddle and thread silver teaspoons**, with armorials. London 1815 by William Eley and William Fearn. 150gms. \$120  
620

**Six silver teaspoons**, Old English pattern, various dates and makers. \$100  
621

**A matching set of six Victorian fruit knives and forks**, embossed silver grapevine handles with armorials and plain silver blades. London 1854. 595gms. \$350  
622

**Six fiddle pattern silver dessert forks**. London 1837(4) and 1838(2), all by Benjamin Stephens. 242gms. \$120  
623

**Six Georgian Scottish crested fiddle pattern silver table forks**. Edinburgh 1818(4) and 1814(2), all by Joseph Pearson. 465gms. \$200  
624

**Six Georgian silver table forks**, Old English pattern, variously monogrammed and crested, various dates and makers. 425gms. \$225  
625

**Six Georgian silver dessert forks**, Old English and Hanoverian pattern, variously crested, various dates and makers. \$150  
626

**Eight fiddle pattern silver dessert spoons**, mostly crested. Dublin 1815(3), Edinburgh 1823(2), Dublin 1807 and London 1814 and 1830. 260gms. \$200  
627

**A pair of Georgian bright-cut silver tablespoons**. London 1800 by Stephen Adams. \$150

628  
**Six Georgian silver dessert spoons**, Old English pattern, various makers and dates, crested and monogrammed. 206gms. \$150  
629

**Three George III silver dessert spoons**, Old English bright cut, London 1787 by George Smith (III) & William Fearn. 110gms. \$150  
630

**A collection of five mother-of-pearl and silver folding fruit knives** with various hallmarks from Victoria to Edward VIII. \$100  
631

**A collection of five mother-of-pearl and silver folding fruit knives**, various hallmarks from 1839 to 1920. \$120  
632

**A collection of five mother-of-pearl and silver folding fruit knives**, various hallmarks from 1889-1920. \$100  
633

**A collection of five mother-of-pearl and silver folding fruit knives**, various hallmarks from 1853 to 1922. \$120  
634

**A George III silver sauce ladle**, Old English pattern. London 1805 by Thomas Wilkes Barker. \$120  
635

**A George III silver sauce ladle**, Old English pattern, circular bowl, engraved with demi-lion crest. London 1806 by Peter and William Bateman. \$275  
636

**A silver teapot**, plain oblong shape with ebony handle and finial, standing on four feet. Birmingham 1912. 610gms. Length 300. \$300  
637

**A three-piece Arts & Crafts tea set**, with hand beaten decoration, the teapot with presentation inscription dated 1913. Birmingham 1901, maker Stewart Dawson & Co. Total weight approx. 735gm. \$500  
638

**A three-piece German 800 standard silver tea set**, baluster shape, hand beaten decoration and wood handles, 970gms. Together with a birds-eye maple tray with silver mounted handles. \$700  
639

**A four-piece German 800 standard silver tea and coffee set**, baluster shape with dark charcoal patina and lacquered wood handles. Total weight approx. 1.9kgs. \$500  
640

**A three-piece crested Irish silver tea set of good weight**, plain circular shapes with central reeded bands, the teapot with ivory heat rings and flower finial. Dublin 1830 and 1831, makers Edward Crofton (teapot) and Charles Marsh. Total weight 1.8kg. \$1000

641  
**A quality Georgian silver salver**, with ornate leaf, shell and scroll border, flat chased foliate decoration, the centre engraved with the Arms of Arundel: sable, six martlets argent; supported on three leaf, shell and scroll feet. London 1787 by Hester Bateman. Approx. 1.8kgs. Diameter 410. See page 33. \$2,000  
642

**A Persian silver oblong tray**, with profuse flat chased decoration of prints and attendants. 350 x 250. Impressed marks. Weight approx. 850gms. \$400  
643

**A striking silver Art Deco lidded entrée dish**, oval form with machine engraved banded highlights and geometric triangular form handles. London 1936 by Sir John Bennett Ltd. 1220gms. Length 310. See page 33. \$650 - \$850  
644

**A 1920s silver hot water pot**, elegant ovoid form with restrained decoration to the top, on a round spreading foot, ebonised handle and knob to lid. Sheffield 1927 by James Dixon & Sons Ltd. Provenance: The Flower Family Collection. 637gms. \$350  
645

**A Victorian silver milk jug**, octagonal baluster shape raised on four scroll feet, fluted panelled body with engraved decoration, acanthus capped handle. London 1848 by Hunt & Roskell. Height 140. 270gm. \$140  
646

**An early 1900s silver tea caddy**, inverted baluster box form, the hinged lid with engraved initials to top, raised on four feet. Chester 1911 by S. Blanckensee & Son Ltd. 290gms. Provenance: The Flower Family Collection. 90 x 80 x 120. \$250  
647

**An early Victorian silver cream jug**. London 1839 by Edward, Edward Jr. and John and William Barnard. Provenance: The Flower Family Collection. 203gms. \$180  
649

**A small two-handled silver sugar basin**, with floral embossed decoration, London 1898, together with a small thistle shaped silver cream jug. Sheffield 1904. \$120  
650

**A Georgian crested silver two-handled sugar basin**, lobed decoration and four ball feet. London 1811. 278gms. Length 200. \$160  
651

**A Georgian silver cream jug**, with embossed fluting and four ball feet. London 1817. 165gms. Length 140. \$120  
652

**A Victorian Georgian Revival silver plate on copper tea caddy**, with engraved classical decoration, width 140. Together with a small ornate silver

plated table dish, Hardy Brothers, Sydney. Diameter 180. \$120

653

**A silver caster shaker**, baluster shape, octagonal section. Sheffield 1914. 120gms. Height 160. \$120

654

**An Edwardian silver pedestal sugar basin**, panelled oval form, spreading oval base. Chester 1904 by James Deakin & Sons. 160gms. \$120

655

**A George III silver vase shaped caster**, with wrythen finial. London 1760 by Samuel Wood. Height 165. 208gms. See page 33. \$220

656

**A Victorian sterling silver cruet set**, the stand with embossed border and engraved decoration, one bottle missing, four bottles with sterling silver tops. Birmingham 1870 by Charles Boynton II. Weight of base 800gms. 260 x 180. \$450

657

**An Edwardian heavy silver oval dish**, the shaped plain flat rim with floral scroll embossed body and tall base with four decorative bracket feet. Sheffield 1901 by Joseph Rodgers & Sons. 324gms. Length 180. \$220

658

**An Edwardian plain silver rimmed hand blown glass bowl**, raised on three plain short tapered feet. Birmingham 1904 by Levi & Salaman. Diameter 180. \$150

659

**A pair of Victorian silver multi-sided silver bon bon dishes** with ornate pierced and embossed decoration. Birmingham 1896. 210gms. Length 200. \$150

660

**A pair of Edwardian silver vase shaped pepper pots** with ornate pierced and embossed decoration and original blue glass liners. London 1901. Height 145. \$250

661

**A small four-slice silver toast rack** with central handle. Birmingham 1935. 115gms. Length 90. \$80

662

**A Victorian two-handed silver wine tasting cup**. London 1892. Diameter 85. \$75

663

**A small Victorian embossed silver basin**. London 1888, with a 1747 Georgian silver coin in base. \$100

664

**A small heavy Art Deco Scottish silver triangular dish**. Edinburgh 1928. 154gms. Width 110. \$100

665

**A pair of 800 standard silver circular table coasters**, of plain design. 300gms. Diameter 160. \$120

666

**A Victorian silver plate table centrepiece**, modelled as a weeping tree

above a pond-form base mounted with a swan. Height 250. \$180

667

**A pair of silver gravy boats**, oval shape with serpentine rim, raised on pad feet and with flying scroll handle. Birmingham 1913 by Adie Bros. Ltd. 192gm. \$100

668

**A mid-century silver bowl**, plain design with scalloped rim. Birmingham 1945 by Thomas Ducrow & Sons. Provenance: The Flower Family Collection. 466gms. \$250

669

**A George III silver pap boat**, plain design. London 1798 by John Emes. Provenance: The Flower Family Collection. \$200

670

**Two Georgian Old Sheffield Plate trays**, oval shape, one with beaded rim, the other with reeded rim, each raised on spay feet. The larger 360 x 270. \$140

671

**Two Victorian silver plated meat dish covers** of plain dome shape, with detachable handles, one with beaded rim, length 295, the other with a plain rim, length 350, both with Sheffield maker's marks. \$200

672

**A pair of early 20thC mother-of-pearl handled and silver plate fish servers**, carved and engraved detail. \$100

673

**A pair of English silver plated candlesticks** of Empire-style with oval bases and fluted decoration. Impressed marks. Height 245. \$120

674

**A rare matching set of four Victorian silver plated Adam style candlesticks**, reeded decoration and beaded borders and original octagonal drip trays. Maker's mark Hawsworth Eyre & Co. Height 280. \$500

675

**A large early 19thC silver plate table candelabra**, the four branches and central column all with matching rims, acanthus leaf highlights, some copper showing. By Waterhouse, Hatfield & Co, Portobello Place, Sheffield. c.1836. Height 565. Old repair to base. \$675

676

**A James Dixon & Sons silver plated three-branch candelabra**, the tall baluster column raised from a triform base with sinuous arms with fixed nozzles, all embellished with acanthus mouldings and other foliate designs. Height 520. \$150

677

**An Indian silver candelabra**, with two sinuous arms issuing from a circular foot, nozzles with gadrooned rims. By Cooke & Calvey. Width 305. \$150

678

**A pair of early Victorian Old Sheffield Plate decorative bottle coast-**

**ers**, turned wooden bases. Diameter 190. \$140

679

**A silver bottle coaster**, pierced scrolling decoration, stamped with '925' and London import marks. Provenance: The Flower Family Collection. Diameter 160. \$150

680

**A late 19thC silver combination propelling pencil and extending dip pen**, engraved hexagonal form, seal-type end. \$120

## PERSIAN RUGS

681

**A small hand knotted Bukhara runner**, the central panel with geometric medallions, three border guards with diamond shaped medallions, light mustard, cream and blue on a red ground. 2450 x 940. \$300

682

**An Iranian Turkoman rug**, the field decorated with three rows of 11 guls, framed by multiple borders. 1700 x 1230. \$350

683

**A hand knotted sculpted silk rug**, in the French manner, floral central medallion with conforming border, pastel tones on a terracotta ground. 1180 x 1820. \$350

684

**A hand knotted Turkoman carpet**, the central panel with five medallions, five border guards, red and black, slightly faded. 1030 x 1850. \$350

685

**A hand knotted Persian carpet**, the central panel with geometric shapes and medallions, three border guards, in bright primary colours, with some fading. 1250 x 2040. \$450

686

**A kilim woven saddlebag**, one side striped, the other in geometric patterns, in terracotta, maroon and white earth tones. 710 x 1520. \$350

687

**A hand knotted Persian rug**, the central panel with geometric medallions, within a shaped flower set border, three border guards, in bright primary colours with some fading and wear. 1250 x 1630. \$400

688

**A hand knotted Persian runner**, the central panel set with stylised urns filled with flowers, three border guards with conforming florals, reds, blues and ivories, considerable fading. 4220 x 830. \$450

689

**A semi-antique Afghan all wool runner**, the field with a single row of 12 classical octagonal guls. 3040 x 900. \$450

690

**A hand knotted Persian Bakhtiari rug**,





514



515



526



534



532



533



541



543



535



545



542



542A



544



546



549



550



551



552



553



554



555



556



558



559



560



561



562



563



564

with central hexagonal medallion and stylised floral motifs. 2000 x 1350. \$475  
691

**An Afghan Baluchi all wool rug**, the field unusually decorated with six lozenge medallions, soft red/brown and indigo tones. 2000 x 1270. \$400  
692

**A Persian hand knotted runner**, the entire field decorated with step-sided medallions and cruciform motifs, framed by zig-zag and rosette borders. 2800 x 600. \$450  
693

**A hand knotted Persian Afshar rug**, with a central diamond medallion. 1650 x 1100. \$250  
694

**A hand knotted Persian Shiraz tribal rug**, with three central diamond medallions and intricate tiny stylised boteh motifs in colours of red, blue and green. 2280 x 1800. \$550  
695

**A tribal Bukhara rug**, traditional red and indigo tones. 2800 x 1860. \$350  
696

**An Afghan hand knotted Chobi carpet**, decorated in traditional old ivory tones and madder, decorated with fine floral medallions framed by multiple guards and a stylised floral meander border. 2900 x 2000. \$400  
697

**A Caucasian hand knotted runner**, the field decorated with five hexagonal geometric motifs and framed by a conforming border and rosette guards, in rich red, cobalt and mustard. 3150 x 950. \$350  
698

**A fine quality hand knotted Tekke Turkoman rug**, the field decorated with rows of small gul motifs. 1230 x 1800. \$450  
699

**A good quality hand knotted Baluchi rug**, profuse stylised floral decoration with orange and green. 1020 x 1560. \$300  
700

**A small hand knotted Persian pictorial rug**, with a design of two figures. 1200 x 880. \$120  
701

**An old hand knotted Persian Hamadan rug**, with stylised floral designs on a rich red ground. 1200 x 1830. \$400  
702

**A hand knotted Turkoman carpet**, the central panel with geometric shapes, four border guards, red and black colourway. 2450 x 1670. \$850  
703

**A small hand knotted silk rug**, a scalloped shape central medallion surrounded by flowering tendrils, three border guards with conforming flowers, in pastel tones on a grey blue ground. 1240 x 800. \$550

704

**A hand knotted Iranian Moud carpet**, the central panel profusely decorated with florals in bright polychrome tones, three border guards with conforming decoration including paisley patterns. 2780 x 2020. \$650  
705

**A hand knotted Persian rug**, decorated with boteh alternating with flowering shrubs, the border guard with interlocking geometric shapes, in bright polychrome colours. 2040 x 1640. \$750  
706

**A large Herati patterned Persian carpet**, fine geometric all-over decoration, central diamond form medallion, replicated to the spandrels, soft tones. 3330 x 2350. \$850  
707

**A large old hand knotted Caucasian rug**, with stylised floral motifs in typical colours on a red ground. 2400 x 3300. \$800  
708

**A large good quality hand knotted Afghan Ankhoi rug**, with a traditional floral design. 2000 x 3000. \$850  
709

**An Indo-Persian hand knotted carpet**, the field decorated with lotus tendrils in ivory on a dark ground, framed by a stylised lotus border. 3100 x 2430. \$750  
710

**A hand knotted Kashan carpet**, decorated with a central medallion and pendant on a polychrome floral field with a bright red ground, framed by multiple guards and a stylised floral meander border. 3000 x 2950. \$1,100  
711

**A large Turkish patchwork kilim carpet**, comprising 51 variously sized and decorated panels stitched together to make a carpet of 2820 x 2020. \$1,350  
712

**A hand knotted elephant foot Turkoman carpet**, the central panel with three rows of medallions, five border guards, in black and red tones. 3000 x 2000. \$1,150  
713

**A fine hand knotted Afghan Andkhoi carpet**, the field decorated with four large medallions and scattered geometric floral designs, bordered by multiple narrow guards and borders in rich red and blue tones. 3500 x 2500. \$1,600

## FURNITURE

714

**An antique French three-fold glass and velvet screen**, shaped top with bevelled glass, on small casters, the base with embroidered gilt decoration, some distress. 1610 x 1450. \$300  
715

**A George II oak country kitchen cabinet**, two panelled doors open to reveal

shelves to one side with small drawers to the other. Handmade 'H' hinges to the doors, good aged appearance and patina. 990 x 250 x 800. \$800

716

**A Sheraton Revival work table**, the turned column raised on quadruped base, the lid opens to reveal various size compartments, decorative inlaid stringing. 600 x 450 x 720. \$250  
717

**A William IV mahogany sewing table**, with single drawer, pleated well and platform base. 430 x 400 x 670. \$650  
718

**A William IV rosewood circular teapoy**, with decorated borders, on a tripod platform base. The top lifting to reveal three tea caddies and a space for a glass mixing bowl. Height 770, diameter 550. \$550  
719

**A Victorian figured walnut pedestal sewing table**, octagonal form, original fitted interior, tripod base. Provenance: The Flower Family Collection. \$500  
720

**A pair of Regency inlaid fruitwood chairs**, upholstered in a dark apricot velvet, the frames inlaid with scrolling florals. 430 x 350 x 860. \$350  
721

**A Georgian fruitwood Windsor back chair**, with decorative splat back, has old repairs. 640 x 480 x 1010. See page 36. \$600  
722

**A Georgian fruitwood country Windsor chair**, solid splat back, requires some attention. 610 x 410 x 960. See page 36. \$500  
722A

**An antique country style elm milking stool**, three traditionally wedged splayed legs. \$110  
723

**A Continental fruitwood hall chair**, plain shaped seat with inlaid and carved back, turned legs and stretch-er base, conforming carved apron to base of seat. 445 x 360 x 1110. \$150  
724

**A c.1900 captain's bow chair**, shaped elm seat, turned spindle back and legs. \$180  
725

**A quality 1930s 'Heals' type oak chair**, open grid designed back, geometric tapestry upholstered drop-in seat. \$110  
726

**A George II style duet stool**, the oblong top with gros point tapestry decorated with leaves and animals dropped into a shaped frieze, raised on six cabriole legs with carved scroll detail. 1020 x 470 x 410. \$220  
727

**A Victorian oak hall chair**, the solid back with arched top rail framing an



heraldic shield painted with an egret crest above a Latin motto. \$175

729

**A late Victorian Gothic inspired walnut hall chair**, the back of arched shape with cruciform piercing. \$120

730

**A Georgian mahogany Pembroke work table**, two drawers to one side, false drawers to the other, the top drawers and elegant tapering legs with decorative inlay stringing, cupped brass casters. Requires attention. When open 790 x 474 x 700. \$250

731

**A Victorian figured walnut games table of refectory style**, the rectangular top with inlaid games board flanked by rose and floral sprays, the scrolling fret carved supports on a stretcher base. 900 x 450 x 680. \$325

732

**A Georgian double crossbanded flap-top card table**, with rounded border, boxwood stringing, lined interior and tapering square section legs. 840 x 440 x 750. \$650

733

**A 19thC mahogany fold-over card table**, the breakfront shaped top with carved detail to the frieze, raised on ring turned and fluted tapering legs. 860 x 430 x 760. \$400

734

**A Victorian walnut flap-top card table**, the top with decorative inlay and opens to reveal green baize, raised on carved legs with stretcher base. 940 x 490 x 720. \$350

735

**A George II oak gate-leg table**, turned and square section legs, drawer to one side with cast iron handle and back plate, the top with good old patina. Measurements when flaps up. 1230 x 830 x 670. \$600

736

**A Regency rosewood breakfast table**, quadrupod base with wrythen twist column, the top and base with decorative brass stringing, brass casters and caster cups. 1360 x 1030 x 715. \$1,000

737

**Six Regency mahogany bar-back dining chairs**, decorated with an ebony inlaid Greek key pattern, upholstered in a silver and cream brocade. 430 x 490 x 910. See *inside back cover*. \$850

738

**An early George III mahogany drop leaf gate-leg dining table**, the flaps raising to form an oval top, the tapered legs with shield form restrained carved knees and well detailed hoof feet. 1200 x 1350 x 760. \$1,500

739

**A set of four Regency simulated rosewood bar back dining chairs**, with drop-in seats, covers worn. \$400

740

**A Georgian mahogany dropside dining table**, solid flame mahogany top raised on ring turned legs. 900 x 1520 x 735. \$400

741

**A set of five William IV mahogany side chairs**, with rope twist and turned centre rails, drop-in seat, sabre back legs and turned front legs, variously upholstered. \$400

742

**A George III flame mahogany supper table**, rectangular form fold-over top, the tapered square section legs with satinwood stringing, single frieze drawer. Some old restoration. 1020 x 465 x 750. \$300

743

**A good set of six Regency flame mahogany dining chairs**, includes one carver with scrolling arms, sabre form front legs, drop-in blue velvet upholstered seats. See *page 36*. \$900

744

**A Victorian walnut serpentine loo table**, the top with book-matched oyster shell veneer, raised on a heavy baluster column from four ornately carved legs. 1480 x 1060 x 720. \$1,000

745

**A Victorian walnut loo table**, quartered veneer top with tilt mechanism, raised on a carved pedestal base. 1230 x 900 x 740. \$350

746

**A 19thC mahogany circular centre table**, the top with thumb moulded edge, raised on a baluster column from a carved tripod base with brass casters. Diameter 1210 x 735. \$400

747

**A set of six Victorian mahogany balloon back dining chairs** with foliate carved fretwork below the top rail and conforming carved back rail, rose coloured patterned upholstered seats, raised on cabriole legs. \$550

748

**Two pairs of Victorian side chairs**, walnut framed with carved foliate detail, all with conforming blue velvet upholstery, and all with cabriole legs. \$200

749

**A Victorian mahogany scroll arm settee**, the shaped back with ornate carving, the scroll arms with conforming carved decoration, raised on double bun feet, upholstered with a self-patterned apple green brocade, button back and seat cushion with two bolster cushions. 1920 x 600 x 1030. \$650

750

**A Victorian walnut grandfather and grandmother chair**, upholstered in matching self-patterned brocade ivory fabric, each with deep buttoned backs. \$400

751

**A Regency mahogany framed armchair**,

with curved bar back, carved back rail, tapestry upholstered seat. \$120

752

**A 1920s oak settle**, in 18thC style, the back carved with a panel depicting a medieval landscape with walled city, figures and domestic beasts. \$300

753

**A William IV mahogany dining chair**, leather seat, tulip form carved front legs. \$120

754

**A Georgian mahogany drop-front bureau**, the interior with drawers and pigeon holes, four full width drawers to the base, raised on bracket feet. Requires minor attention. 1015 x 550 x 1100. \$650

755

**A Victorian mahogany twin pedestal partner's desk**, the top with three frieze drawers to each side and gilt tooled red leather insert, the pedestals with three drawers to one side, cupboards to the other. 1830 x 1100 x 780. \$1,500

756

**A Georgian mahogany fall-front bureau**, with four graduated full width drawers, pierced brass bale handles, the interior with central cupboard and various small shelves, standing on bracket feet. Minor attention required. 900 x 460 x 1040. \$700

757

**A Victorian twin pedestal desk**, the inverse breakfront top with tooled leather inlay, three drawers to frieze and two banks of three drawers all with ring turned handles. 1200 x 590 x 740. \$450

758

**A Victorian mahogany leather topped writing table**, tooled decoration, two frieze drawers, the restrained turned legs with brass cup and porcelain wheel casters. 1210 x 550 x 730. \$400

759

**An Edwardian Sheraton Revival rosewood lady's escritoire**, of small proportions, with superstructure of a single doored cupboard flanked by two drawers, tooled leather writing surface above a single frieze drawer above a sliding well. Stained satinwood inlays. Provenance: The Flower Family Collection. 690 x 490 x 1100. \$600

760

**An early 19thC walnut chest of drawers**, two half drawers over three full drawers, raised on a plinth base with shaped apron, inlaid ebony stringing, with later brass handles and keyhole escutcheons. Requires minor attention. 1145 x 580 x 1060. \$1,000

761

**A colonial sandalwood campaign chest**, two half drawers over four full drawers, with inset brass military style handles, two brass handles to each side, with carved gallery to the top. 1050 x 500 x 1250. \$2,000



762

**A Victorian oak chest of drawers**, the inverted breakfront top with thumbnail moulded edge above carved corbels and five drawers, configured as two of half width above three of full width and graduating depths, all with bun handles. 1220 x 550 x 1050. \$650

763

**A Georgian flat front chest of four drawers**, configured as two of half width above two of full width, all with brass plate back bale handles, cock-beaded edges, raised on bracket feet. 1000 x 510 x 770. \$650

764

**A Victorian mahogany bowfront chest of drawers**, two half over three full width drawers, turned wood handles, raised on bun feet, keyhole escutcheons absent. 1210 x 510 x 1060. \$750

765

**A Victorian mahogany flat front chest of drawers**, two half drawers over three full width, turned handles, on plinth base, requires minor attention. 1070 x 530 x 1050. \$650

766

**A Georgian mahogany flat front chest of drawers**, two half drawers over three full width, raised on bracket feet, brass handles and decorative back plates. 1070 x 550 x 980. See page 36. \$1,000 - \$1,400

767

**A Continental inlaid cabinet**, the stepped top with one central cupboard and three small drawers, cupboard door as three false drawers, the base with conforming inlay to the two cupboard doors, the interior with one shelf, raised on bun feet, pine carcass. Requires minor attention. 1090 x 500 x 1640. \$1,000

768

**A Georgian astragal glazed bookcase**, inlaid decoration, dental moulding to the pediment, raised on bracket feet. 1180 x 270 x 1370. \$600

769

**A Victorian mahogany bookcase cabinet**, the glazed top with two internal shelves, plain pediment, the base with two half drawers over two cupboard doors, decorative corbels to the side and on plinth base. 210 x 450 x 2020. \$1,100

770

**An elegant Sheraton Revival mahogany twin pedestal sideboard**, each pedestal with pagoda tops, raised on slender tapering legs, flanking a large central drawer, all with flame mahogany panels with inlaid decoration. 1990 x 560 x 120. \$950

771

**A Victorian mahogany inverse break-front sideboard** with three ogee frieze drawers above four panelled cupboard doors, with an arched leaf and

scroll carved back. With key, some fading. 1540 x 520 x 1550. \$500

772

**A Victorian walnut serpentine credenza with restrained classical inlay**, three mirrored panelled doors, full turned column mouldings and original glass handles. With key. 1340 x 400 x 840. \$450

773

**A Victorian walnut credenza**, with central panelled door flanked by curved glazed cupboards, restrained classical inlay in ebony and boxwood and with ormolu embellishments. Some of the banded metalwork has sprung. 1200 x 380 x 1060. \$850

774

**A good George III oak housekeeper's cupboard**, the top with two double panelled doors flanking a fixed conforming section, opening to reveal three shelves, the base with a combination of four short drawers and a small single panelled door cupboard, raised on bracket feet, brass H-form hinges, good colour and patina. 1660 x 505 x 2080. \$2,600

775

**A George III mahogany linen press**, the upper section with flame mahogany panelled doors opening to reveal an interior with original sliding shelves, the lower section with four drawers, configured as two of half-width above two of full width with cockbeaded edges and oval brass plate back handles, raised on splay feet. 1230 x 560 x 2010. \$1,200

776

**An Edwardian Sheraton Revival display vitrine on table base**, the two doors with curved glazing bars enclosing adjustable shelves, the table base with serpentine front and single frieze drawer, cross-banded and satinwood strung. 845 x 440 x 1660. \$650

777

**A late 19thC Jacobean style dresser base**, good small proportions, the two drawers each with two fielded moulded panels, open base, the turned legs with stretcher supports. 1490 x 485 x 885. See page 36. \$1,000

778

**An early 20thC oak tall narrow glazed display cabinet**, the single near full length door enclosing adjustable glass shelves, two small cupboard doors below, flanked by egg & dart mouldings. Provenance: The Flower Family Collection. 840 x 200 x 2640. See inside back cover. \$800 - \$1,500

779

**An early 20thC oak tall narrow glazed display cabinet**, the single near full length door enclosing adjustable glass shelves, two small cupboard doors below, flanked by egg & dart mouldings. Provenance: The Flower Family Collection. 840 x 200 x 2640. Matching the above cabinet. \$800 - \$1,500

780

**An early 20thC oak tall narrow glazed display cabinet**, the single near full length door enclosing adjustable glass shelves, two small cupboard doors below, flanked by egg & dart mouldings. Provenance: The Flower Family Collection. 1040 x 310 x 2615. Similar to above. \$800 - \$1,500

781

**An early 20thC oak tall narrow glazed display cabinet**, the single near full length door enclosing adjustable glass shelves, two small cupboard doors below, flanked by egg & dart mouldings. Provenance: The Flower Family Collection. 1040 x 310 x 2615. Similar to above. \$800 - \$1,500

782

**A good late Victorian oak display credenza**, the architectural scalloped and oak leaf carved pediment above a single large glazed door enclosing an adjustable glass shelf with mirror back, flanked by an angular open compartment with large tiled panels of cavaliers above smaller compartments with mirror backs, all above a semi-conforming base. Provenance: The Flower Family Collection. 1380 x 480 x 2350. See page 36. \$1,500 - \$2,500

783

**A late Victorian walnut display credenza**, the top with architectural broken arched pediment above two decorative glazed panelled doors, various mirror back sections and carved panels, all above two further glazed panelled doors and assorted open shelves, some with mirrored backs, turned supports. Provenance: The Flower Family Collection. 1360 x 425 x 2220. \$1,000 - \$1,500

784

**A Victorian ebonised display credenza**, long form with open central section with an adjustable shelf flanked by two glazed cabinets, each enclosing two fitted shelves, ormolu mounts including goat's head masks, gilt bead trim. 1990 x 365 x 970. See page 36. \$1,000 - \$1,400

785

**A colonial counter top mahogany display cabinet**, original glass, the front detailed in black on gilt 'The Name 'Lever' on Soap is a Guarantee...', hinged glazed back door. 580 x 310 x 770. \$350

786

**A colonial stained pine glazed shop counter cabinet**, rectangular form, the side door with an Art Deco handle. 830 x 580 x 1000. \$500

787

**A Victorian 'Lambert & Butler's High Class Cigarettes' shop display countertop cabinet**, the mirrored top panel with maker's details, the narrow glass fronted body with five side drawers,

the cigarette type detailed in gilt and blue to front, 'RISING SUN' etc., the plinth base with decorative moulding. 795 x 555 x 170. \$850

788

**An early 20thC waxed pine haberdashery work table**, the upstand back with an extra large turned roller housed in brackets, the front with fabric catcher and part lower shelf, tapered legs. 1150 x 810 x 950. See page 36. \$550

789

**A large Georgian oak coffer**, two-plank lid, three shield shaped panels to the front with three drawers to the base, the plinth base with shaped apron. 1430 x 560 x 960. \$700

790

**A 19thC French iron and marble console table**, the one-piece red marble shaped top with pale inclusions supported on the iron frame with original distressed paint finish, the two S-scroll front supports with acanthus leaf detail. 1600 x 530 x 840. Provenance: Purchased from Graham Geddes Antiques, Armadale, Australia by Stuart Rattle Interiors for our vendor, June 2011. \$1,400

791

**An early Victorian mahogany Pembroke table**, the plain top with rounded corners, turned legs, single drawer and original brown china casters. Width 1170, length extended 1070, height 740. \$250

792

**An elegant mahogany oval writing table of French Louis XV style** with tooled green leather top, well proportioned cabriole legs with shaped aprons between and gilt metal mounts. 1030 x 680 x 730. \$750

793

**A Georgian mahogany tilt-top wine table**, on baluster support with tripod base and pad feet. Diameter 830. \$350

794

**A Georgian mahogany tilt-top tripod wine table**, the plain circular dished top comprising one single piece of mahogany. Some surface marks. Turned column support and pad feet. Diameter 800. \$450

795

**A Georgian oak snap-top wine table**, the circular top raised on a turned slender baluster column from a tripod base. Some faults. Diameter 480, height 700. \$180

796

**A European beech occasional table**, the circular dished top with gilt tooled black leather inlay, raised on four tapering legs terminating in brass capped feet. Diameter 630, height 760. \$350

797

**A George III mahogany tilt-top occa-**

**sional table**, the square top raised on a turned column from a tripod base. 660 x 610 x 775. \$350

798

**A George III mahogany standing two-section corner cabinet**, the top with two four-panel glazed doors enclosing three fitted shelves, the base with two shaped panelled doors on a shaped bracket foot plinth base. 1070 x 515 x 2100. \$450

799

**A Georgian style country oak standing corner cabinet**, the top section with two fielded panelled doors framed by canted panelled sides, a smaller conforming base section, H-form brass hinges, with keys. 1150 x 650 x 2120. See page 36. \$1,000

800

**A Georgian country style tall narrow oak bookcase**, tongue and groove back, four adjustable shelves, the lower cupboard door with single panel, brass H-form hinges. 725 x 410 x 2090. \$800

801

**A 19thC carved oak dumb waiter**, the rectangular top with repeating design carved rim, single frieze drawer with leaf scroll applied detail and mask handle, wrythen twist column supports. 1065 x 440 x 920. \$350

802

**An old Chinese rosewood 'opium bed'**, the rectangular plinth with carved panels forming a frame to three sides, raised on a carved frieze and heavy cabriole legs with associated later blue upholstered cushions and bolsters. 1820 x 1100 x 940. \$1,000

803

**A Chinese teak display cabinet**, the upper section with pierced decorative cornice, the cabinet with simulated bamboo frame, glazed sides and doors reveal stepped shelves to the interior, the back panels with low relief carving, raised on a conforming base. 700 x 350 x 2000. See inside back cover. \$800

804

**A Chinese teak small two door cabinet**, 610 x 330 x 820. \$200

805

**A quality Chinese rosewood display cabinet**, the base with four panelled frieze drawers with two pairs of carved panelled doors above, the top with a step-down middle panelled section, scroll and floral carved frieze gallery and panel. 1480 x 380 x 1095. \$1,400

806

**A matching pair of impressive Chinese huanghuali display cabinets**, with multi-tiered open shelves each with a small cupboard in the base and three small drawers, restrained carved decoration and pierced galleries and slender square section supports. Width of each 980, depth 330, height 1980. \$5,000

807

**A pair of Chinese hardwood horse-shoe-back folding armchairs**, of traditional style with brass mounts, the broad splats carved with dragons chasing flaming pearls. \$500

808

**A Chinese teak altar table**, with carved and pierced frieze, furled ends to the oblong top, square legs terminating in square fret feet. 1530 x 430 x 960. \$400

809

**A Chinese lacquer and hardwood screen**, each of the four leaves set with four hardstone animals and precious objects on various shaped panels on a ground of shell inlaid cruciform motifs, the reverse with gilt rondels of various designs - dragons, bears, birds, deer and other animals. Each leaf 1830 x 4850. See inside back cover. \$850

810

**A pair of Chinese black lacquer drum stools**, carved in low relief and decorated in gilt pen work and enamel with floral designs, cloud motifs and square fret borders. Diameter 370, height 470. \$250

811

**A set of five Chinese rosewood chairs**, with open work backs of square fret form, two panels with raised decorations, plain seat, carved aprons, raised on square section legs with in-turned feet. \$500

812

**A Chinese hardstone and lacquer 'moon gate' screen**, the large circular panel formed of three sections, decorated in applied hardstone with eight women, musicians and dancers standing before an ornate temple building. 1830 x 1820. See inside back cover. \$800

813

**A Chinese teak table**, the square top raised on a carved and pierced apron and square section legs. 880 x 890 x 795. \$225

814

**Two 19thC overmantel mirrors**, both with floral decoration and columns to each side, both re-gilded and one with replacement mirror. 655 x 980 and 675 x 960. \$650

815

**A George III plain mahogany toilet swing mirror**, the bow-front base with satinwood stringing enclosing two drawers. \$150

816

**After Murillo**, 'The Little Fruit Seller', oil on canvas. 900 x 700. \$400

817

**An early 20thC 'The Motty Marksman' refurbished large brass telescope on tripod by J.H. Steward of London**, small sighting lens to top, various adjusting wheels and arm, counter weight to base. Length 1280. \$1,500 - \$1,800







- 818**  
**A mahogany torchiere**, with fluting, acanthus carving and wrythen decoration, raised from a tripod base. Height 350. \$200
- 819**  
**An early 1900s alabaster table lamp**, a young girl standing next to a square section column, on stepped base with a round filled shade. Some damage. Provenance: The Flower Family Collection. Height 560. \$650
- 820**  
**A late Victorian grey and pale alabaster torchiere**, the square top with canted corners, plain cylindrical section stem, octagonal base. Provenance: The Flower Family Collection. Height 1070. See *inside back cover*. \$400
- 821**  
**A late Victorian grey and pale alabaster torchiere**, similar to above. Provenance: The Flower Family Collection. Height 1010. \$350
- 822**  
**A pair of late 19thC large terracotta classical garden urns**, squat baluster form, the shoulder with four masks, one bearded gent and three women, connected by swag braided hair, square plinth bases. Provenance: The Flower Family Collection. Height 615. See *inside back cover*. \$1,000 - \$1,600
- 823**  
**A pair of late 19thC large classical garden urns**, the long ovoid bodies with a wide encircling band of classical figured decoration, other encircling bands with classic scrolls and scalloped designs, the short scroll handles to the multiple banded necks with original cap covers, circular pedestal base on removable square plinth. Provenance: The Flower Family Collection. Height overall 1295. See *inside back cover*. \$1,500 - \$2,500
- 824**  
**A late Victorian steel shoe scraper grate**, the 14 steel fins in step moulded frame. Provenance: The Flower Family Collection. 725 x 525. \$150
- 825**  
**A late Victorian steel shoe scraper grate**, the 14 steel fins in step moulded frame. Provenance: The Flower Family Collection. 725 x 525. \$150
- 
- FINE ART
- 
- 826**  
**Blythe Fletcher**, 'On the Moors', gouache, signed. 410 x 600. \$250
- 827**  
**Blythe Fletcher**, 'Landscape with Shepherd and Flock', gouache, signed. 500 x 480. \$150
- 828**  
**A. Charpy (1920s European)**, untitled still life, watercolour, signed and dated '14. 385 x 290. \$120
- 829**  
**After Henri Houben (1858-1931)** The Fish Market in Holland, hand coloured lithograph. 460 x 680. \$200
- 830**  
**Octavius Thomas Clark (1850-1921)**, 'Wooded Landscape with Stream', oil on canvas, signed. 750 x 490. \$400
- 831**  
**Roberto Marshall (U.K. 1849-1926)**, 'Scottish Landscape with Lake and Sheep'. 340 x 575. \$200
- 832**  
**Charles Nathaniel Worsley (1862-1923)**, untitled 'Scottish Lake Scene', watercolour, signed. 500 x 705. \$800
- 833**  
**Marc Chagall (1887-1985)** 'Bouquet pour Fernand' (1972), lithograph 39/50, 325 x 250. \$200
- 834**  
**Marcel Genay (French 1929-93)**, Cosmochimère, lithograph with colour on black paper 10/30, signed. 390 x 470. \$120
- 835**  
**Ken J. Andrews**, 'Merriman Street, Millers Point, Sydney', watercolour, signed, entitled verso. 215 x 290. \$100
- 836**  
**Artist unknown**, Sydney Harbour with Hospital Ship', pastel, unsigned. 295 x 470. \$200
- 837**  
**Alison Ormsby**, 'Sparrowhawk on Branch', watercolour, signed and dated 1985. 225 x 225. \$200
- 838**  
**Bruce Harvey**, 'Hooded Hunting Falcon', gouache and pencil, signed and dated '71. 660 x 495. \$150
- 839**  
**Roy Dalgarno**, 'Rajput Warrior', lithograph 2/10, signed and entitled. 380 x 460. \$125
- 840**  
**Roy Dalgarno**, (1910-2001), 'Miner Resting', oil on canvas, signed, entitled and dated 1983 verso. Exhibited: Rudy Komon Art Gallery, Woollahra, Sydney. 865 x 715. See *inside back cover*. \$1,500
- 841**  
**Roy Dalgarno (1910-2001)**, 'Wild Grass - Green', oil on canvas, signed, entitled and dated 1972 verso. 860 x 1170. \$400
- 842**  
**Cedric Savage (1901-1969)**, 'Mediterranean Market Scene', watercolour, signed. 500 x 635. See *back cover*. \$650
- 843**  
**Raymond Horsfield (Aust. 1930-)**, 'Landscape with Gum Trees', oil on board, signed and dated '49. 265 x 305. \$150
- 844**  
**Donald H. Green**, 'Great White Herons (Kōtuku) Amongst Reeds at the Murray River Estuary', oil on canvas, signed and dated 1979, commissioned by our vendor from the artist. 2500 x 2800. See *back cover*. \$1,500 - \$2,000
- 845**  
**Marcus King**, 'Te Aro Flat. From The Hills', oil on canvas board, signed, entitled and labelled on reverse. Provenance: 'Purchased McGregor Wrights, Wellington'. 230 x 250. See *inside back cover*. \$550
- 846**  
**Frederick A. Price**, 'Wellington Harbour from the Hills', oil on canvas board, signed. 285 x 335. Note: this companion work to above comes from the same collection. \$200
- 847**  
**Harry V. Miller (1907-86)**, 'The Moonlit Road' (1907-86), signed and entitled on framer's label verso, c.1932. 270 x 180. \$100
- 848**  
**Jenny Wimperis (1838-1927)**, 'A Corner of an Old Boatshed', watercolour, signed and dated 1885. 315 x 240. \$150
- 849**  
**Olivia Spencer Bower (1905-82)**, 'Medieval Village', watercolour and ink, signed. 330 x 240. \$550
- 850**  
**Marilyn Webb (b.1937)**, 'Evening Tussock and the Waipori River', hand coloured etching, signed, entitled and dated '81. 550 x 330. \$400
- 851**  
**Laurence William Wilson (1850-1912)**, 'South Island Mountain and River Landscape', watercolour, signed and dated 1879. 330 x 570. \$500
- 852**  
**Ken J. Andrews**, 'Edge of the Bush, Barrytown', watercolour, signed, entitled verso. 360 x 530. \$120
- 853**  
**Ron Stenberg**, 'Storm Clouds Over Colonial House', acrylic on board, signed. 755 x 600. See *inside back cover*. \$1,500 - \$2,500
- 854**  
**Mary McIntyre**, untitled 'Mountain to Sea' series, oil on canvas, signed and detailed on reverse. 1830 x 900. See *back cover*. \$2,500 - \$5,000
- 855**  
**Malcolm Warr**, 'West Coast, Waikanae', mixed media on board, signed and dated '65, original John Leech Gallery label on reverse detailing 'purchased at a One Man Exhibition at the John Leech Gallery, June 1966'. 600 x 745. See *back cover*. \$250
- 856**  
**Nugent Welch**, 'Shipping Wellington Harbour', watercolour, signed. 170 x 240. \$225
- 857**  
**B. Lynes**, 'Mrs Siemen's Garden, Takapuna', watercolour, signed and dated 1930. 305 x 220. \$100

- 858**  
**William Menzies Gibb**, 'River Landscape', watercolour, signed. 225 x 325. \$175
- 859**  
**Simon Williams**, 'Waitemata Panorama, Orakei', oil on canvas, signed, entitled verso. 375 x 1830. See *back cover*. \$1,000
- 860**  
**Attributed Henry Heath Glover**, 'Mercury Island', oil on canvas, signed with initials, entitled, c.1910. 600 x 900. \$400
- 861**  
**Don Binney**, 'Karikari', lithographic poster for the Royal Forest and Bird Protection and The Environmental Defence Societies, 1980. 365 x 675 \$250
- 862**  
**Pat Hanly (1932-2004)**, 'Mt Eden' (Labour Party Poster [Doctor Ian Scott, Eden]), screenprint 486/565. 700 x 590. \$100
- 863**  
**Ian Scott (1945-2013)**, 'Lattice', screenprint, unsigned. 475 x 475. See *back cover*. \$450
- 864**  
**Gretchen Albrecht**, 'Witness', lithograph 9/30, signed, entitled and dated '82. 500 x 690. See *back cover*. \$450
- 865**  
**Wayne Youle**, 'I HOPE THIS REACHES YOU IN TIME', acrylic on cardboard, initialled and dated '15 on reverse, copy of this labelled on reverse. 490 x 325. Biographical details on reverse. See *inside back cover*. \$800
- 866**  
**Trenton W. Garratt (b.1980)**, 'Untitled Cityscape', ink and acrylic on canvas, signed and dated 2005. 355 x 455. See *back cover*. \$600
- 867**  
**Trenton Garrett**, 'Gasp II' (Renoir), gouache on screenprint, entitled, signed and dated 2009 verso. 220 x 185. \$400
- 868**  
**Michael Smither**, 'Island 4', screenprint, initialled, entitled and dated '74. 400 x 315. See *back cover and front cover*. \$120
- 869**  
**Michael Smither**, untitled, screen print, initialled, dated '75 and no. 1/40. 255 x 230. \$150
- 870**  
**Ted Dutch**, 'Jazz Drummer IV', screenprint 3/36, signed, entitled and dated 2003. 160 x 165. See *back cover*. \$150
- 871**  
**Ted Dutch**, 'Astronaut', screen print 15/36, signed, entitled and dated 1999. 160 x 165. \$150
- 872**  
**Robert Ellis**, untitled (Motorway Journey), ink on paper, signed and dated 1968. 740 x 545. See *back cover*. \$1,800
- 873**  
**Tom Scott**, 'This One is for North Korea', ink on paper, signed and dated 10/8/17. Signed and detailed on reverse 'Boy! I hope this doesn't come to pass! Cheers and Aroha. Tom Scott.' 285 x 410. \$250
- 874**  
**Sylvia Siddell (1941-2011)**, untitled, graphite on paper, signed and dated 30.7.1980. 335 x 335. \$300
- 875**  
**A Geoff Thomson corrugated iron artwork**, with diagonally shaped top. 570 x 1040. \$650
- 876**  
**A Geoff Thomson corrugated iron artwork**, with stencilled decoration of various N.Z. flora and fauna, in reds, blues, greens and oranges on a white ground. 780 x 1100. \$850
- 877**  
**Fred Graham (b.1928)**, untitled wooden sculpture, raised on a wooden painted base, labelled with artist's name underneath. Height 400. \$600
- 878**  
**Roderick Burgess**, large scale bronze standing lion, incised signature, date 'August 1995' and foundry mark to the base. Height 580, raised on a rectangular substantial tapered solid totara plinth base. Height overall 775. See *inside back cover*. \$2,500 - \$3,500
- 879**  
**William (Bill) Hammond (b.1947)**, 'Head Bone 2', ink and acrylic on paper, title inscribed, signed and dated 1989, 1200 x 790. Note: Illustrated: Peter McLeavey, The Life and Times of a New Zealand Art Dealer by Jill Trevelyan. See *back cover*. \$6,500 - \$7,500
- 880**  
**Kay Billings**, untitled abstract house design, acrylic on board, signed. 750 x 495. \$120
- 881**  
**Karl Feodor Sim [aka C.F. Goldie] (1923-2013)**, Portrait of Harata Rewiri Tarapata, conté and graphite, inscribed 'For Joan & Pat, Harere (sic) ra, Kia ora, C.F. Goldie'. 275 x 200. \$200
- 882**  
**Robyn Morrison (1944-93)**, an original photographic print of a young Maori woman from a sketch by C.F. Goldie, produced for publication in Alister Taylor's 'C F Goldie: Prints, Drawings and Criticism', pg 233. This image also features on the slipcover of the publication. 215 x 165. \$300
- 883**  
**Wayne Vickers**, 'From Tay St., Mt Maunganui', oil on canvas, signed, entitled and dated 2014 verso. 280 x 355. \$150
- 884**  
**Charles Nathaniel Worsley (1862-1923)**, 'The Blue Pool, Wai-ora Valley, Wairaki' watercolour, signed. 170 x 230 \$180
- 885**  
**John Horner**, 'Railyards', oil on board, signed. 265 x 340. \$120
- 886**  
**Pauline and James Yearbury**, 'Hine-Ngahuru (Autumn Girl)', incised wood panel, labelled verso, signature to base of panel. Provenance: The Flower Family Collection. 605 x 305. \$150
- 887**  
**Selwyn Muru**, 'Fish', acrylic on board, signed, entitled and signed on reverse. 332 x 458. See *back cover*. \$150
- 888**  
**Ethel Richardson**, 'Fox Glacier and Flowering Rata', oil board, signed. 280 x 280. \$150
- 889**  
**Stanley Palmer**, 'From Maungawhau', bamboo lithograph 19/100, signed, entitled and dated 1988. 420 x 590. \$400
- 890**  
**Stanley Palmer**, 'Towards Maungarei', bamboo lithograph 2/100, signed, entitled and dated 1988. 410 x 580. \$400
- 891**  
**Stanley Palmer**, 'Mountainside', bamboo lithograph proof, signed, entitled and dated 1980. 305 x 205. \$250
- 892**  
**Stanley Palmer**, 'Te Toka Rurenga Tai II', bamboo lithograph 4/40, signed, entitled and dated 1980. 145 x 250. \$200
- 893**  
**George Charles Haite (UK 1855-1924)**, 'Sun and Rain, Wells, Norfolk', watercolour heightened with Chinese white, signed and dated 1906, entitled verso. 315 x 730. Provenance: Sir Robert Anderson (1866-1942), by bequest and descent to our vendor. Sir Robert was the benefactor who gifted the Anderson House and Park to the City of Invercargill to become the Invercargill Public Art Gallery. c.f. <http://www.invercargillpublicartgallery.nz/the-house/> \$800

END OF SALE



721



722



743



766



788



773



774



782



777



784



799



— Prices realised (hammer price) Cordys 22nd May 2018 Antique & Art Auction —

LOT	\$	LOT	\$	LOT	\$	LOT	\$	LOT	\$	LOT	\$	LOT	\$	LOT	\$	LOT	\$
1.....	\$625	83.....	\$200	162.....	\$425	244.....	\$90	347.....	\$350	439.....	\$500	52.....	\$250	597.....	\$260	672.....	\$5,200
2.....	\$1,000	84.....	\$300	163.....	\$220	245.....	\$130	348.....	\$100	440.....	\$3,300	521.....	\$220	598.....	\$300	674.....	\$280
3.....	\$150	85.....	\$180	164.....	\$450	248.....	\$180	349.....	\$200	441.....	\$250	522.....	\$560	599.....	\$210	675.....	\$100
4.....	\$900	86.....	\$280	166.....	\$90	251.....	\$350	350.....	\$850	442.....	\$70	523.....	\$200	600.....	\$140	679.....	\$220
5.....	\$215	87.....	\$210	167.....	\$130	252.....	\$100	351.....	\$350	443.....	\$70	524.....	\$160	601.....	\$625	680.....	\$950
6.....	\$250	88.....	\$170	168.....	\$210	254.....	\$80	352.....	\$260	444.....	\$320	525.....	\$375	602.....	\$1,100	681.....	\$600
7.....	\$240	89.....	\$90	169.....	\$200	255.....	\$350	353.....	\$290	445.....	\$245	526.....	\$1,100	603.....	\$2,250	683.....	\$350
8.....	\$425	90.....	\$375	170.....	\$335	256.....	\$150	354.....	\$440	446.....	\$450	527.....	\$500	604.....	\$850	684.....	\$300
9.....	\$199	91.....	\$170	171.....	\$200	258.....	\$300	355.....	\$240	447.....	\$500	529.....	\$140	605.....	\$1,500	685.....	\$250
10.....	\$950	95.....	\$680	172.....	\$170	259.....	\$170	356.....	\$180	448.....	\$550	530.....	\$400	606.....	\$500	685A.....	\$225
11.....	\$800	96.....	\$4,250	175.....	\$400	263.....	\$620	357.....	\$420	449.....	\$180	531.....	\$80	608.....	\$900	686.....	\$500
12.....	\$900	97.....	\$250	176.....	\$80	264.....	\$220	361.....	\$385	450.....	\$170	532.....	\$280	609.....	\$210	687.....	\$4,000
12A.....	\$400	99.....	\$150	178.....	\$180	265.....	\$1,200	363.....	\$575	453.....	\$230	533.....	\$50	610.....	\$225	688.....	\$1,700
13.....	\$2,200	100.....	\$140	179.....	\$140	267.....	\$500	364.....	\$1,000	458.....	\$2,300	534.....	\$600	611.....	\$900	689.....	\$700
13A.....	\$350	101.....	\$190	180.....	\$300	270.....	\$400	365.....	\$1,300	459.....	\$320	537.....	\$1,400	612.....	\$450	690.....	\$1,200
18.....	\$280	103.....	\$100	183.....	\$80	271.....	\$300	366.....	\$950	460.....	\$210	538.....	\$380	613.....	\$525	691.....	\$1,900
19.....	\$320	105.....	\$80	184.....	\$140	272.....	\$250	367.....	\$1,150	461.....	\$200	539.....	\$310	614.....	\$180	692.....	\$750
20.....	\$220	106.....	\$100	185.....	\$120	273.....	\$75	368.....	\$1,000	462.....	\$300	540.....	\$150	615.....	\$450	693.....	\$750
22.....	\$310	107.....	\$170	186.....	\$200	274.....	\$170	369.....	\$150	463.....	\$410	541.....	\$240	616.....	\$600	694.....	\$2,500
23.....	\$170	108.....	\$130	187.....	\$60	275.....	\$375	370.....	\$280	464.....	\$560	542.....	\$260	617.....	\$120	695.....	\$1,600
24.....	\$300	109.....	\$800	188.....	\$135	279.....	\$180	372.....	\$1,400	465.....	\$200	543.....	\$280	618.....	\$300	696.....	\$1,700
26.....	\$130	111.....	\$440	191.....	\$80	280.....	\$180	374.....	\$420	466.....	\$575	544.....	\$140	619.....	\$300	698.....	\$1,200
28.....	\$200	112.....	\$270	192.....	\$310	281.....	\$100	375.....	\$270	468.....	\$275	545.....	\$280	620.....	\$210	699.....	\$190
29.....	\$90	113.....	\$100	194.....	\$600	283.....	\$360	376.....	\$1,750	470.....	\$725	546.....	\$210	621.....	\$1,500	700.....	\$100
33.....	\$80	114.....	\$100	195.....	\$270	284.....	\$100	377.....	\$460	471.....	\$280	548.....	\$275	622.....	\$1,500	701.....	\$150
34.....	\$70	115.....	\$130	196.....	\$140	285.....	\$350	378.....	\$460	472.....	\$1,450	550.....	\$220	623.....	\$850	702.....	\$200
35.....	\$70	116.....	\$150	198.....	\$120	286.....	\$130	379.....	\$460	473.....	\$390	551.....	\$260	624.....	\$900	703.....	\$100
36.....	\$70	117.....	\$690	199.....	\$200	287.....	\$140	380.....	\$460	475.....	\$490	552.....	\$500	625.....	\$950	705.....	\$220
37.....	\$80	120.....	\$100	200.....	\$700	288.....	\$80	382.....	\$190	476.....	\$315	553.....	\$280	626.....	\$800	706.....	\$400
38.....	\$130	121.....	\$200	201.....	\$200	290.....	\$300	383.....	\$380	477.....	\$425	554.....	\$440	627.....	\$700	707.....	\$120
39.....	\$70	122.....	\$460	202.....	\$110	292.....	\$100	384.....	\$320	478.....	\$280	556.....	\$280	628.....	\$1,400	708.....	\$520
42.....	\$90	122A.....	\$550	204.....	\$1,100	295.....	\$75	395.....	\$500	481.....	\$575	557.....	\$350	631.....	\$375	709.....	\$100
43.....	\$600	123.....	\$100	205.....	\$200	299.....	\$325	398.....	\$30,000	482.....	\$50	558.....	\$380	632.....	\$900	710.....	\$500
44.....	\$310	124.....	\$270	205A.....	\$130	300.....	\$400	402.....	\$2,350	483.....	\$575	559.....	\$200	633.....	\$1,300	712.....	\$70
45.....	\$150	125.....	\$180	206.....	\$440	302.....	\$400	403.....	\$2,200	485.....	\$170	560.....	\$600	634.....	\$600	713.....	\$280
46.....	\$210	126.....	\$180	207.....	\$650	303.....	\$1,250	404.....	\$4,600	486.....	\$130	561.....	\$380	635.....	\$800	714.....	\$300
47.....	\$100	127.....	\$180	209.....	\$180	306.....	\$200	406.....	\$1,100	487.....	\$180	562.....	\$70	636.....	\$500	715.....	\$650
48.....	\$200	128.....	\$325	211.....	\$240	308.....	\$210	407.....	\$1,400	488.....	\$850	563.....	\$70	637.....	\$900	716.....	\$650
49.....	\$270	129.....	\$475	212.....	\$2,250	309.....	\$80	408.....	\$1,100	489.....	\$190	565.....	\$325	638.....	\$525	717.....	\$4,200
51.....	\$90	131.....	\$4,400	212A.....	\$60	310.....	\$150	411.....	\$2,200	491.....	\$240	566.....	\$280	639.....	\$200	719.....	\$5,600
52.....	\$230	132.....	\$545	213.....	\$850	313.....	\$400	412.....	\$2,900	492.....	\$180	567.....	\$300	641.....	\$1,000	720.....	\$2,200
53.....	\$9000	133.....	\$160	214.....	\$1,500	315.....	\$250	413.....	\$1,350	493.....	\$1,400	568.....	\$80	642.....	\$700	721.....	\$50
55.....	\$14	134.....	\$500	215.....	\$1,700	316.....	\$240	415.....	\$750	494.....	\$270	569.....	\$160	643.....	\$525	722.....	\$2,500
57.....	\$400	135.....	\$650	216.....	\$225	317.....	\$320	416.....	\$660	495.....	\$295	570.....	\$190	644.....	\$800	724.....	\$3,200
59.....	\$3,350	136.....	\$6,000	218.....	\$120	318.....	\$250	417.....	\$300	496.....	\$375	571.....	\$550	645.....	\$2,600	725.....	\$250
60.....	\$800	139.....	\$1,300	219.....	\$280	319.....	\$90	418.....	\$280	498.....	\$525	572.....	\$130	647.....	\$200	726.....	\$800
61.....	\$525	140.....	\$325	220.....	\$110	322.....	\$475	419.....	\$170	499.....	\$550	573.....	\$800	648.....	\$700	727.....	\$170
62.....	\$475	141.....	\$275	221.....	\$90	325.....	\$500	420.....	\$60	500.....	\$100	0574.....	\$1,500	649.....	\$625	728.....	\$250
63.....	\$970	142.....	\$180	223.....	\$110	326.....	\$275	421.....	\$150	502.....	\$300	576.....	\$650	650.....	\$500	729.....	\$120
64.....	\$1,000	143.....	\$180	224.....	\$110	327.....	\$210	422.....	\$200	503.....	\$225	578.....	\$1,350	653.....	\$1,300	730.....	\$60
65.....	\$1,150	144.....	\$220	226A.....	\$300	329.....	\$370	423.....	\$180	504.....	\$325	581.....	\$1,500	654.....	\$550	731.....	\$200
66.....	\$475	145.....	\$180	228.....	\$1,000	332.....	\$925	424.....	\$220	505.....	\$300	583.....	\$180	655.....	\$925	732.....	\$450
67.....	\$850	146.....	\$1,000	229.....	\$700	333.....	\$1,100	424A.....	\$550	506.....	\$1,600	584.....	\$450	656.....	\$775	733.....	\$450
68.....	\$750	147.....	\$1,150	230.....	\$1,350	334.....	\$1,200	425.....	\$340	506A.....	\$750	585.....	\$1,100	657.....	\$2,500	734.....	\$450
69.....	\$160	148.....	\$325	231.....	\$1,400	335.....	\$180	426.....	\$110	507.....	\$140	586.....	\$350	658.....	\$560	736.....	\$650
70.....	\$275	149.....	\$200	232.....	\$850	336A.....	\$550	426A.....	\$130	508.....	\$340	587.....	\$500	662.....	\$1,050	737.....	\$80
71.....	\$620	150.....	\$300	233.....	\$600	337.....	\$180	427.....	\$140	509.....	\$300	588.....	\$450	663.....	\$180	738.....	\$500
72.....	\$775	151.....	\$240	234.....	\$1,200	338.....	\$1,000	428.....	\$200	510.....	\$775	589.....	\$4,000	664.....	\$220	739.....	\$400
73.....	\$450	153.....	\$280	235.....	\$90	339.....	\$200	429.....	\$200	511.....	\$300	590.....	\$750	665.....	\$80	740.....	\$175
74.....	\$275	154.....	\$475	237.....	\$380	339A.....	\$350	430.....	\$170	513.....	\$1,700	591.....	\$500	666.....	\$350		
75.....	\$1,000	155.....	\$60	238.....	\$110	340.....	\$60	431.....	\$100	515.....	\$5,000	592.....	\$750	667.....	\$850		
76.....	\$410	158.....	\$100	239.....	\$80	341.....	\$100	432.....	\$220	516.....	\$440	593.....	\$525	668.....	\$100		
77.....	\$225	159.....	\$140	240.....	\$140	341A.....	\$120	433.....	\$160	517.....	\$130	594.....	\$650	669.....	\$100		
78.....	\$160	160.....	\$250	241.....	\$175	342.....	\$400	434.....	\$140	518.....	\$182	595.....	\$550	670.....	\$625		
79.....	\$230	161.....	\$625	243.....	\$100	346.....	\$290	437.....	\$170	519.....	\$180	596.....	\$950	671.....	\$950		



## Postal Bidding

Ph: (09) 523 1049 / Email: info@cordys.co.nz / www.cordys.co.nz

**There is a 17.25% Buyer's Premium (including GST) on the hammer price**

Bidding Number	If applicable, otherwise we use your surname	
Full Name		
Address		
Email Address		
Phone	Bus.	A/H

Lot #	Brief Description	Bid Amount	\$

Please bid on my behalf at the above sale for the following lots. These bids are to be executed as cheaply as permitted by other bids or reserves. Buyers are reminded to get their bids in early to ensure their placement. I agree to comply with the Conditions of Sale as printed in this Catalogue.

SIGNATURE

Date:     /     / 2018

## Catalogue Subscription

Please return completed form to Cordy's Auckland office,  
PO Box 74071 Greenlane Auckland 1546

Please forward me the following catalogues,  
(postage within New Zealand included,  
overseas subscribers please add costs as noted):

	Tick	NZ Cost	Australia /Pacific	EUROPE /USA
Antiques, Estate Jewellery, Oriental, Tribal Art, Fine & Applied Art for Monthly Photo Catalogues	<input type="checkbox"/>	\$100	\$150	\$200

All costs noted are in New Zealand dollars. I enclose my cheque payable to John Cordy Ltd for the above ticked catalogues, totalling NZ\$\_\_\_\_\_.00

If extra catalogues in the categories chosen are produced, these will be sent to you at no extra cost. Overseas subscribers must provide a bank draft in New Zealand dollars to John Cordy Ltd.

Name

Address

City

Country

---

## Conditions of Sale

---

1. The highest bidder to be the purchaser subject to the Auctioneers having the right to refuse the bid of any person. Should any dispute arise as to the biddings, the lot in dispute to be immediately put up for sale again at the preceding bidding, or the Auctioneer may declare the purchaser which will be conclusive.
2. No person shall advance less at a bid than a sum nominated by the Auctioneer and no bid shall be retracted.
3. All lots are sold subject to the right of the seller or his agent to bid or else to impose a guide or reserve price.
4. The purchaser to fill in bidding form before the sale giving details of name, address, bank etc, and to sign such form declaring knowledge of buyers obligations. Immediately after the sale, the purchaser to pay down 10% of the purchase price in part payment and shall pay the balance within five days of the date of sale. All lots to be paid for in full and removed from Cordy's premises same week of sale.
5. The purchaser shall pay to John Cordy Limited (Cordy's) a premium of 15% of the hammer price together with GST on such premium at the current rate.
6. All lots are sold as shown and with all faults, imperfections (visible or not) and errors of description. Neither Cordy's or its vendor are responsible for errors of description or for the genuineness or authenticity of any lot or for any fault or defect in it and make no warranty whatever. Buyers proceed upon their own judgement.
7. Cordy's act as agents and have full discretion to conduct all aspects of the sale and to refuse any bidding or to withdraw any lot or lots from sale without in either case giving any reason.
8. All lots are at the buyers risk from the fall of the hammer and are to be taken away at the buyers expense immediately after the sale. Cordy's will not be responsible if any lot is lost, stolen, damaged or destroyed after the sale. If the lots are not cleared and paid for the same week of the sale they may then be sold immediately either publicly or by private treaty, without notice being given to the defaulter.
9. Upon failure of the purchaser to comply with any of the above conditions, the money deposited in part payment shall be forfeited and the defaulter shall make good any loss arising from the re-sale together with the charges and expenses in respect of both sales.
10. No goods are to be removed while selling is in progress. Receipted invoices must be produced prior to delivery of any lot.
11. The Auctioneers reserve the right to request identification in the case of any purchaser not known to the Auctioneer who pays by cheque and can insist on cash or a bank cheque.
12. Charging to credit cards or payment by overseas cheques will not be accepted as means of payment.
13. No person purchasing an item which falls within the provisions of the Antiquities Act 1975 or the Arms Act 1958 shall be entitled to take possession of the item unless and until such person has produced to Cordy's a licence under the appropriate Act.
14. All lots to be paid for in full and removed from the premises the same week of the sale.
15. The buyer shall be responsible for any removal or storage charges on any lot not taken away the same week of the sale. If for any reason storage is not available at Cordy's premises arrangements will be made to transport and store uncollected goods elsewhere solely at the buyers expense. Cordy's will not be liable to the Purchaser for them in any respect.
16. The Auctioneer cannot be held responsible for any injury or damage to persons or property through attempts to fire firearms which are sold as collectors items only.
17. All electrical goods are sold on the basis of their decorative value only and should be assumed not to be operative. It is essential that prior to any intended use, the electrical system is checked and approved by a qualified electrician.

### Important Notice

All lots sold 'as is' in accordance with Paragraph 6 of the Conditions of Sale. Intending buyers should always satisfy themselves as to the condition and description of any lot and their attention is drawn to Paragraph 6.

---

## Postal Bids

---

Instructions to bid at sales are accepted by Cordy's and are carried out free of charge. Lots will always be bought as favourably as allowed by other such bids, bidding in the saleroom and any reserve. VENDORS are requested to read and are bound by the Conditions

of Sale printed on the reverse side of Cordy's Contract to Sell. PRESALE ESTIMATES are intended as a guide only. Cordy's staff are available during viewing times to assist prospective buyers with estimates and auction room procedures.

---

## Charges and Commissions

---

1. All lots sold with hammer price between \$1.00 to \$99.00 will be charged at 20% commission plus GST.
2. All lots sold with hammer price \$100.00 and over will be charged at 15% commission plus GST.

**A buyers premium of 15% will be charged and GST at the current rate will be charged on the premium.**  
**All lots sold are to be paid in full and removed from Cordy's premises the same week of sale.**

---

## General Information

---

INSPECTIONS are made and advice given concerning the sale of Antiques and Works of Art free of charge at Cordy's in Auckland, and for a reasonable fee elsewhere.

VALUATIONS for insurance, probate or family division are undertaken on either a quotation basis or a small percentage plus travelling expenses.

IF BUYING FOR EXPORT, please enquire as to GST status of vendors.

INSTRUCTIONS to bid at sales are accepted by Cordy's and carried out free of charge. Lots will always be bought as cheaply as is allowed by the bidding in the saleroom and any reserves imposed.





## Upcoming Auctions

2018

11th June	Estate/Collectable Auction	View Friday & Monday prior
<b>19th June</b>	<b>Antique &amp; Art Auction</b>	<b>Entries close 25th May</b>
25th June	Estate/Collectable Auction	View Friday & Monday prior
2nd July	Estate/Collectable Auction	View Friday & Monday prior
9th July	Estate/Collectable Auction	View Friday & Monday prior
<b>17th July</b>	<b>Antique &amp; Art Auction</b>	<b>Entries close 22nd June</b>
23rd July	Estate/Collectable Auction	View Friday & Monday prior
30th July	Estate/Collectable Auction	View Friday & Monday prior
6th August	Estate & Collectable Auction	View Friday & Monday prior
<b>14th August</b>	<b>Antique &amp; Art Auction</b>	<b>Entries close 20th July</b>
20th August	Estate/Collectable Auction	View Friday & Monday prior
27th August	Estate/Collectable Auction	View Friday & Monday prior
3rd September	Estate/Collectable Auction	View Friday & Monday prior
<b>11th September</b>	<b>Antique &amp; Art Auction</b>	<b>Entries close 17th August</b>
17th September	Estate/Collectable Auction	View Friday & Monday prior
24th September	Estate/Collectable Auction	View Friday & Monday prior
1st October	Estate/Collectable Auction	View Friday & Monday prior
<b>9th October</b>	<b>Antique &amp; Art Auction</b>	<b>Entries close 14th September</b>
15th October	Estate/Collectable Auction	View Friday & Monday prior
23rd October	Estate/Collectable Auction	View Friday & Tuesday prior
29th October	Estate/Collectable Auction	View Friday & Monday prior
<b>6th November</b>	<b>Antique &amp; Art Auction</b>	<b>Entries close 12th October</b>
12th November	Estate/Collectable Auction	View Friday & Monday prior
19th November	Estate/Collectable Auction	View Friday & Monday prior
26th November	Estate/Collectable Auction	View Friday & Monday prior
<b>4th December</b>	<b>Antique &amp; Art Auction</b>	<b>Entries close 9th November</b>
10th December	Estate/Collectable Auction	View Friday & Monday prior
17th December	Special Christmas Sale	View Friday & Monday prior
Cordy's closes Friday 21st December at midday		

### JOHN CORDY LIMITED

FINE ART AUCTIONEERS AND APPRAISERS

180 GREAT SOUTH ROAD, REMUERA, AUCKLAND 1051, NEW ZEALAND

P.O. BOX 74071 GREENLANE PHONE (09)523-1049 FAX (09)520-7186

EMAIL [info@cordys.co.nz](mailto:info@cordys.co.nz) WEBSITE [www.cordys.co.nz](http://www.cordys.co.nz)



820



803



812



737



809



778



823



822



878



853



845



840



865





841



855



844



863



864



866



872



879



854



859



870



868



887